



THE HIGHFIELD
SCHOOL

The Highfield School



Our commitment to our students

At The Highfield School, we are committed to:

- Helping our students attain their highest possible exam results
- Providing a disciplined yet caring environment in which students thrive
- Providing the highest quality teaching
- Helping students develop strong values such as honesty, helpfulness, justice and loyalty
- Making students feel confident and ready for their future lives
- Developing in each individual a strong sense of community.

A warm
welcome



A warm welcome

>> Equal opportunities for all

>> Maximising academic excellence and personal development

>> Prepared for the future: focused on students now

A warm welcome

It is a privilege to be the Headteacher of The Highfield School and it is with great pride that I present to you our prospectus. Established in 1965 and completely rebuilt in 2017, we are a high performing co-educational comprehensive, situated in Letchworth Garden City, Hertfordshire.

Equal opportunities for all

Each year we admit 180 students from all backgrounds and abilities. For every student our commitment is the same: to support them to achieve their maximum potential and to take advantage of the wide range of educational opportunities we offer both in and out of the classroom. The confidence that our students gain from our ethos of challenge and support makes them ready for their future lives.



Maximising academic excellence and personal development

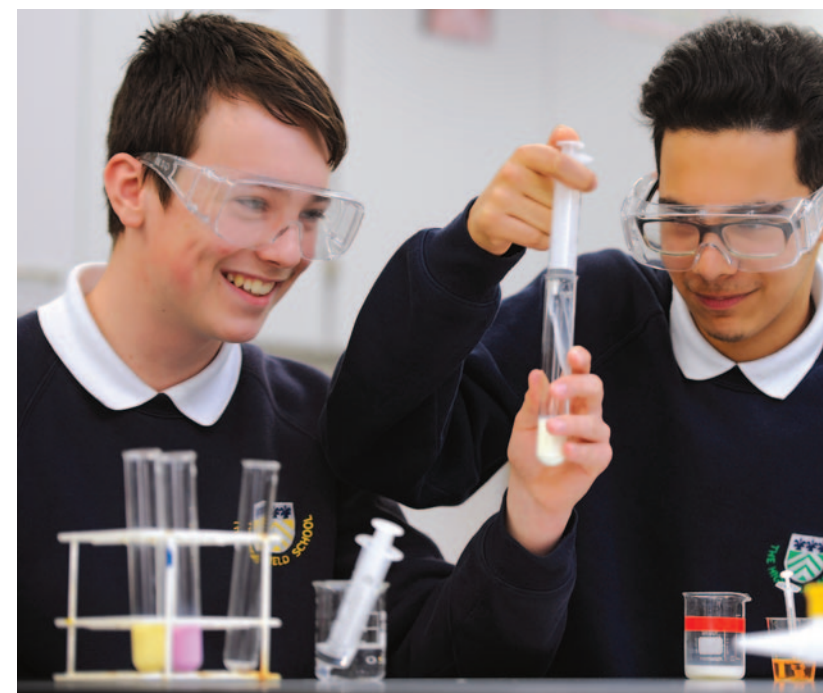
The Highfield school is an ambitious school that sets high expectations of staff and students alike, challenging and supporting everyone to be the best they can be and achieve their goals. We are recognised for the excellent academic grades achieved by our young people – a testament to the high-quality teaching and learning that is at the heart of what we do. That, coupled with our disciplined yet caring environment, offers our students the opportunity to thrive.

As a learning community, academic achievement is of course incredibly important. However, of equal importance is helping our students to develop strong values such as honesty, helpfulness, justice and loyalty – values which help each young person to gain a strong sense of their place in their local, national and global communities.

Prepared for the future: focused on students now

Our school is forward looking, without losing sight of the traditional values that are the foundation of any successful school and wider community. We are privileged as adults that the greatest gift we can give to our young people is a first class educational experience. Through continually striving to improve and develop the quality of the education we offer, we will continue to deliver outstanding results and develop young people, ready to be the leaders of the future, in our globally diverse and competitive world.

Lucy Miles
Headteacher



A focus on academic achievement

- » We make the most of each individual's strengths
- » Proud of our high success rate
- » The school of choice



A focus on academic achievement

At The Highfield School we focus on helping students of all abilities to achieve academic excellence, continually challenging them to improve.

We make the most of each individual's strengths

We are committed to delivering interesting lessons, provided by passionate teachers in a supportive yet challenging atmosphere; one that encourages students to strive to achieve their very best. Students enjoy access to an extensive and varied curriculum, and while each student is expected to undertake statutory subjects, we recognise that a 'one size fits all' approach does not work. Where possible we personalise each individual's education to make the most of their personal strengths.

Proud of our high success rate

We are proud of, and never complacent about, our high academic success rate which is the result of the high quality of our teaching. Our lessons engage, interest and encourage our students, whatever path they choose. It is a pride that we see reflected in our students, through the loyalty and support they show each other and the school when representing us in the wider community.

The school of choice

It is this continual commitment to providing the very best education possible that has, over recent years, seen demand for school places increase year-on-year. The Highfield School is now the school of choice for a large part of our local community and as a result, demand for places is high.





A focus on
academic
achievement



A supportive
and caring
environment

A supportive and caring environment

>> Strong pastoral support

>> Mutual respect is highly valued

>> Loyalty, competitiveness and the work ethic are rewarded

A supportive and caring environment

While our main objective is to ensure our students attain the best possible exam results, we also believe that we have a vital role to play in developing each individual's confidence. As an inclusive school, we respect and value the diversity of the community we serve and we aim to enable all students, irrespective of ability, to participate fully in the school curriculum.

Strong pastoral support

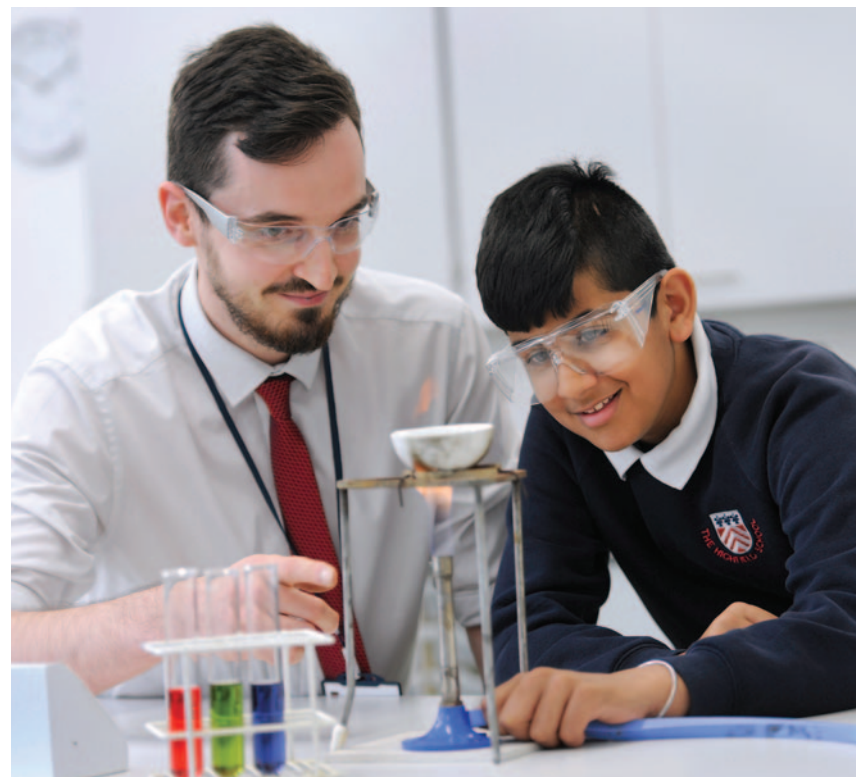
Close co-operation between home and school is essential if our young people are to gain maximum benefit from their schooling. The school's strong pastoral support system enables us to develop effective home-school relationships that are beneficial to each student. We recognise also that academic excellence can only be achieved in an atmosphere that fosters a sense of wellbeing, fairness, justice and belonging. We are, therefore, committed to providing an environment of tolerance and respect, where the aspirations and responsibilities of individuals are emphasised.

Mutual respect is highly valued

We expect our young people to show care and the utmost respect for both staff and fellow students alike, which they can expect to receive in return. We are justifiably proud of them, not only for their hard work in achieving academic success, but also for their helpful, polite and honest commitment to the school, each other, and our wider community.

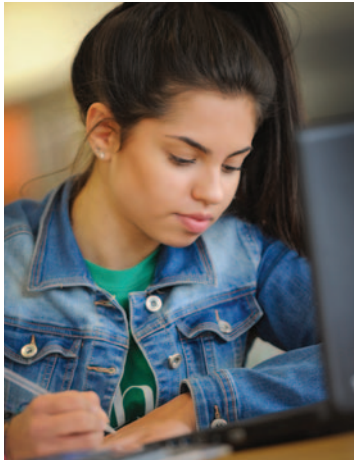
Loyalty, competitiveness and the work ethic are rewarded

With so many hours of their day spent at the school, we make every effort to ensure that our students enjoy the advice, guidance and care they need to be both happy and successful in their education. We actively foster an environment where loyalty and teamwork, competition and pride in the work ethic are rewarded, and our House assemblies make a point of celebrating both individual and team success.



Fulfilling potential in the Sixth Form

- » Extensive opportunities for Sixth Form students
- » Preparing for higher education or work
- » A varied social calendar



Fulfilling potential in the Sixth Form

Our Sixth Form is a successful and thriving community committed to helping young people fulfil their potential at University, College or in starting a career in their chosen field of employment.

Extensive opportunities for Sixth Form students

Our extensive Sixth Form provision covers a wide range of courses, excellent careers facilities, and a well proven system for helping students with their university or college applications. Students follow a range of A level and vocational courses, which are enhanced further by access to courses in the Letchworth Sixth Form Consortium. Excellent facilities lead to great success, both in terms of examination results and progression into either higher or further education or into employment.

Preparing for higher education or work

Extra privileges and responsibilities, more choice of what and how they study, a wide range of voluntary opportunities, the chance to become an ambassador in areas of interest in wider community, all help prepare our students for the transition into higher education or the workplace.

A varied social calendar

The social aspect of the Sixth Form is an essential part of students' personal development. The elected Sixth Form Committee arranges events such as the Christmas Quiz Evening, the leavers' event and the highly successful May Ball. In addition, The Highfield School Sixth Formers successfully compete in sporting events, debating competitions, mock trials and take part in a number of subject specific visits as well as both national and international trips.



Fulfilling
potential in
the Sixth Form

In partnership with our local and international communities

- >> Community and business opportunities
- >> Engaging with the wider world

In partnership with our local and international communities

As a local school at the heart of our community, links with our community, schools and businesses are an essential part of The Highfield School's life. We recognise that, as educators, our role is not simply to ensure academic success but to help develop rounded individuals who will understand that not only is their contribution to their community a responsibility and a privilege but that it can also be fun.

Community and business opportunities

By having students engage with their community, other schools – both in the UK and internationally – and through working on projects in partnership with business, they have access to experiences that are essential to helping them find out who they are and to developing their individual personalities. We ensure that all students have access to a wide range of additional activities and opportunities at lunch time and after school, such as music, drama and sport. These may culminate in overseas trips and tours that help enrich their education.

Engaging with the wider world

Every student has the opportunity to engage with the wider world; to experience new people in unfamiliar situations, and develop interests beyond the remit of mainstream education. This could be through working with local charities, representing the school at the many sports and science events which occur throughout the year, taking part in our annual art exhibition or drama productions, corresponding with an overseas student or taking part in our Sixth Form Ambassador Scheme.



The
Highfield
School



THE HIGHFIELD SCHOOL

To find out more about The Highfield School or to arrange a visit, please call **01462 620500** or email **admin@highfield.herts.sch.uk**

Alternatively, you can visit our web site at **www.highfield.herts.sch.uk** or write to us at

The Highfield School
Highfield
Letchworth Garden City
Hertfordshire
SG6 3QA



The Highfield School
Highfield
Letchworth Garden City
Hertfordshire
SG6 3QA

tel: 01462 620500
email: admin@highfield.herts.sch.uk
www.highfield.herts.sch.uk



THE HIGHFIELD
SCHOOL