

Broadfield Primary School



BROADFIELD PRIMARY SCHOOL

Child Protection Policy

Issued:	January 2015
Latest Review Date:	Autumn 2014
Due for Review:	Annually, January 2016
Issue number:	2015.01.07
Committee:	School Improvement

Printed copies of this document are not copy controlled and are to be used for information only.

Signed:

Date:

Position:

Hertfordshire County Council

Children's Services

Model Policies for Schools

Model Child Protection Policy for Schools

Department:	Child Protection and Statutory Review Service
Author:	Frazer Smith
Date of issue:	November 2014
Review date:	August 2015
Reference:	CSF0034



CHILD PROTECTION POLICY

Broadfield Primary School

Policy Review

This policy will be reviewed in full by the Governing Body on annually.

The policy was last reviewed and agreed by the Governing Body in January 2015.

It is due for review in January 2016 *date* (up to 12 months from the above date).

Signature Date

Head Teacher

Signature Date

Chair of Governors





CONTENTS

1	Introduction
2	Statutory Framework
3	The Designated Senior Person
4	The Governing Body
5	School Procedures
6	When to be Concerned
7	Dealing with a Disclosure
8	Confidentiality
9	Communication with Parents
10	Record Keeping
11	Allegations Involving School Staff/Volunteers
Appendix 1	Indicators of Harm
Appendix 2	Keeping Children Safe in Education: information for all school and college staff (DFE 2014)

1. INTRODUCTION

Safeguarding is defined as protecting children from maltreatment, preventing impairment of health and/or development, ensuring that children grow up in the provision of safe and effective care and taking action to enable all children to have the best life chances.

This Child Protection Policy forms part of a suite of documents and policies which relate to the safeguarding responsibilities of the school.

In particular this policy should be read in conjunction with the Safer Recruitment Policy, Behaviour Policy, Physical Intervention Policy, Anti-Bullying Policy, Code of Conduct/Staff Behaviour Policy and ICT Acceptable Usage Policy.

Purpose of a Child Protection Policy

To inform staff, parents, volunteers and governors about the school's responsibilities for safeguarding children.
To enable everyone to have a clear understanding of how these responsibilities should be carried out.

Hertfordshire Safeguarding Children Board Inter-agency Child Protection and Safeguarding Children Procedures

The school follows the procedures established by the Hertfordshire Safeguarding Children Board; a guide to procedure and practice for all agencies in Hertfordshire working with children and their families.

School Staff & Volunteers

All school and college staff have a responsibility to provide a safe environment in which children can learn.

School staff and volunteers are particularly well placed to observe outward signs of abuse, changes in behaviour and failure to develop because they have daily contact with children.

All school staff will receive appropriate safeguarding children training (which is updated regularly – Hertfordshire Safeguarding Children Board advises every 3 years), so that they are knowledgeable and aware of their role in the early recognition of the indicators of abuse or neglect and of the appropriate procedures to follow. It is good practice for the Designated Senior Person to deliver an annual update.

Temporary staff and volunteers will be made aware of the safeguarding policies and procedures by the Designated Senior Person.

Mission Statement

Establish and maintain an environment where children feel secure, are encouraged to talk, and are listened to when they have a worry or concern.

Establish and maintain an environment where school staff and volunteers feel safe, are encouraged to talk and are listened to when they have concerns about the safety

and well being of a child.

Ensure children know that there are adults in the school whom they can approach if they are worried.

Ensure that children who have been abused will be supported in line with a child protection plan, where deemed necessary.

Include opportunities in the curriculum for children to develop the skills they need to recognise and stay safe from abuse.

Contribute to the five outcomes which are key to children's wellbeing:

- be healthy
- stay safe
- enjoy and achieve
- make a positive contribution
- achieve economic wellbeing

Consider how children may be taught about safeguarding, including online, through teaching and learning opportunities, as part of providing a broad and balanced curriculum.

Staff members working with children are advised to maintain an attitude of 'it could happen here' where safeguarding is concerned. When concerned about the welfare of a child, staff members should always act in the interests of the child.

Implementation, Monitoring and Review of the Child Protection Policy

The policy will be reviewed annually by the governing body. It will be implemented through the school's induction and training programme, and as part of day to day practice. Compliance with the policy will be monitored by the Designated Senior Person and through staff performance measures.

2. STATUTORY FRAMEWORK

In order to safeguard and promote the welfare of children, the school will act in accordance with the following legislation and guidance:

- The Children Act 1989
- The Children Act 2004
- Education Act 2002 (section 175)
- Hertfordshire Safeguarding Children Board Inter-agency Child Protection and Safeguarding Children Procedures (Electronic)
- Keeping Children Safe in Education (DFE 2014)
- Keeping Children Safe in Education: information for all school and college staff (DFE 2014) – APPENDIX 2
- Working Together to Safeguard Children (DfE 2013)
- The Education (Pupil Information) (England) Regulations 2005

Working Together to Safeguard Children (DfE 2013) requires all schools to follow the procedures for protecting children from abuse which are established by the Hertfordshire Safeguarding Children Board.

Schools are also expected to ensure that they have appropriate procedures in place for responding to situations in which they believe that a child has been abused or are at risk of abuse - these procedures should also cover circumstances in which a member of staff is accused of, or suspected of, abuse.

Furthermore

Keeping Children Safe in Education (DfE April 2014) places the following responsibilities on all schools:

- Schools should be aware of and follow the procedures established by the Hertfordshire Safeguarding Children Board
- Staff should be alert to signs of abuse and know to whom they should report any concerns or suspicions
- Schools should have procedures (of which all staff are aware) for handling suspected cases of abuse of pupils, including procedures to be followed if a member of staff is accused of abuse, or suspected of abuse
- A Designated Senior Person (referred to in 'Keeping Children Safe in Education (DFE, April 2014) as Designated Safeguarding Lead') should have responsibility for co-ordinating action within the school and liaising with other agencies
- Staff with the designated safeguarding lead should undergo updated child protection training every two years

Keeping Children Safe in Education (DfE April 2014) also states:

Governing bodies and proprietors should ensure there is an effective child protection policy in place together with a staff behaviour policy (code of conduct). Both should be provided to all staff – including temporary staff and volunteers – on induction. The child protection policy should describe procedures which are in accordance with government guidance and refer to locally agreed inter-agency procedures put in place by the LSCB, be updated annually, and be available publicly either via the school or college website or by other means.

3. THE DESIGNATED SENIOR PERSON (referred to in 'Keeping Children Safe in Education (DFE, April 2014)as Designated Safeguarding Lead')

Governing bodies and proprietors should ensure that the school or college designates an appropriate senior member of staff to take lead responsibility for child protection. This person should have the status and authority within the school to carry out the duties of the post including committing resources and, where appropriate, supporting and directing other staff.

The Designated Senior Person for Child Protection in this school is:

NAME: Mrs Christine Hall

A Deputy DSP should be appointed to act in the absence/unavailability of the DSP.

The Deputy Designated Senior Person for Child Protection in this school is:

NAME: Mrs Jade Barakat

The broad areas of responsibility for the designated safeguarding lead are:

Managing referrals

Refer all cases of suspected abuse to the local authority children's social care and:

- Police (cases where a crime may have been committed).
- Liaise with the head teacher or principal to inform him or her of issues especially ongoing enquiries under section 47 of the Children Act 1989 and police investigations
- Act as a source of support, advice and expertise to staff on matters of safety and safeguarding and when deciding whether to make a referral by liaising with relevant agencies

Training

- The designated safeguarding lead should receive appropriate training carried out every two years in order to:
- Understand the assessment process for providing early help and intervention, for example through locally agreed common and shared assessment processes such as early help assessments
- Have a working knowledge of how local authorities conduct a child protection case conference and a child protection review conference and be able to attend and contribute to these effectively when required to do so
- Ensure each member of staff has access to and understands the school's or college's child protection policy and procedures, especially new and part time staff
- Be alert to the specific needs of children in need, those with special educational needs and young carers
- Be able to keep detailed, accurate, secure written records of concerns and referrals
- Obtain access to resources and attend any relevant or refresher training courses
- Encourage a culture of listening to children and taking account of their wishes and feelings, among all staff, in any measures the school or college may put in place to protect them

Raising Awareness

- The designated safeguarding lead should ensure the school or college's policies are known and used appropriately:
- Ensure the school or college's child protection policy is reviewed annually and the procedures and implementation are updated and reviewed regularly, and work with governing bodies or proprietors regarding this
- Ensure the child protection policy is available publicly and parents are aware of the fact that referrals about suspected abuse or neglect may be made and the role of the school or college in this
- Link with the local LSCB to make sure staff are aware of training opportunities and the latest local policies on safeguarding
- Where children leave the school or college ensure their child protection file is copied for any new school or college as soon as possible but transferred separately from the main pupil file

4. THE GOVERNING BODY

Governing bodies and proprietors must ensure that they comply with their duties under legislation. They must also have regard to this guidance to ensure that the policies, procedures and training in their schools or colleges are effective and comply with the law at all times.

The nominated governor for child protection is:

NAME: **Lorraine Shearman**

In particular the Governing Body must ensure:

- The responsibilities placed on governing bodies and proprietors include:
- their contribution to inter-agency working, which includes providing a coordinated offer of early help when additional needs of children are identified
- ensuring that an effective child protection policy is in place, together with a staff behaviour policy
- appointing a designated safeguarding lead who should undergo child protection training every two years
- prioritising the welfare of children and young people and creating a culture where staff are confident to challenge senior leaders over any safeguarding concerns
- making sure that children are taught about how to keep themselves safe.

5. SCHOOL PROCEDURES - STAFF RESPONSIBILITIES

If any member of staff is concerned about a child he or she must inform the Designated Senior Person.

The member of staff must record information regarding the concerns on the same day. The recording must be a clear, precise, factual account of the observations. (Pro-forma is available on the Hertfordshire Grid for Learning).

The Designated Senior Person will decide whether the concerns should be referred to Children's Services: Safeguarding and Specialist Services. If it is decided to make a referral to Children's Services: Safeguarding and Specialist Services this will be discussed with the parents, unless to do so would place the child at further risk of harm.

Particular attention will be paid to the attendance and development of any child about whom the school has concerns, or who has been identified as being the subject of a child protection plan and a written record will be kept.

If a pupil who is/or has been the subject of a child protection plan changes school, the Designated Senior Person will inform the social worker responsible for the case and transfer the appropriate records to the Designated Senior Person at the receiving school, in a secure manner, and separate from the child's academic file.

The Designated Senior Person is responsible for making the senior leadership team aware of trends in behaviour that may affect pupil welfare. If necessary, training will be arranged.

As a person who works with children, staff have a duty to refer safeguarding concerns to the designated senior person for child protection. However if:

- concerns are not taken seriously by an organisation or
- action to safeguard the child is not taken by professionals and
- the child is considered to be at continuing risk of harm

Then Staff should speak to a DSP in their school or contact Hertfordshire Children's Services (including out of hours) on 0300 123 4043.

If, at any point, there is a risk of immediate serious harm to a child a referral should be made to children's social care immediately. Anybody can make a referral. If the child's situation does not appear to be improving the staff member with concerns should press for re-consideration. Concerns should always lead to help for the child at some point.

If the allegations raised by the staff member are against other children the school should follow section 4.3 of the Hertfordshire Safeguarding Children Board Procedures Manual - Children Who Abuse Others

6. WHEN TO BE CONCERNED

All staff and volunteers should be aware that the main categories of abuse are:

- Physical abuse
- Emotional abuse
- Sexual abuse
- Neglect

All staff and volunteers should be concerned about a child if he/she presents with indicators of possible significant harm – **see Appendix 1 for details.**

Generally, in an abusive relationship the child may:

- Appear frightened of the parent/s or other household members e.g. siblings or others outside of the home
- Act in a way that is inappropriate to her/his age and development (full account needs to be taken of different patterns of development and different ethnic groups)

- Display insufficient sense of 'boundaries', lack stranger awareness
- Appear wary of adults and display 'frozen watchfulness'

7. DEALING WITH A DISCLOSURE

If a child discloses that he or she has been abused in some way, the member of staff / volunteer should:

- Listen to what is being said without displaying shock or disbelief
- Accept what is being said
- Allow the child to talk freely
- Reassure the child, but not make promises which it might not be possible to keep
- Not promise confidentiality – it might be necessary to refer to Children's Services: Safeguarding and Specialist Services
- Reassure him or her that what has happened is not his or her fault
- Stress that it was the right thing to tell
- Listen, only asking questions when necessary to clarify
- Not criticise the alleged perpetrator
- Explain what has to be done next and who has to be told
- Make a written record (see Record Keeping)
- Pass the information to the Designated Senior Person without delay

Support

Dealing with a disclosure from a child, and safeguarding issues can be stressful. The member of staff/volunteer should, therefore, consider seeking support for him/herself and discuss this with the Designated Senior Person.

8. CONFIDENTIALITY

Safeguarding children raises issues of confidentiality that must be clearly understood by all staff/volunteers in schools.

- All staff in schools, both teaching and non-teaching staff, have a responsibility to share relevant information about the protection of children with other professionals, particularly the investigative agencies (Children's Services: Safeguarding and Specialist Services and the Police).
- If a child confides in a member of staff/volunteer and requests that the information is kept secret, it is important that the member of staff/volunteer tell the child in a manner appropriate to the child's age/stage of development that they cannot promise complete confidentiality – instead they must explain that they may need to pass information to other professionals to help keep the child or other children safe.
- Staff/volunteers who receive information about children and their families in the course of their work should share that information only within appropriate professional contexts.

9. COMMUNICATION WITH PARENTS

Broadfield Primary School will:

Ensure the child protection policy is available publicly either via the school or college website or by other means.

Parents should be informed prior to referral, unless it is considered to do so might place the child at increased risk of significant harm by:

- The behavioural response it prompts e.g. a child being subjected to abuse, maltreatment or threats / forced to remain silent if alleged abuser informed;
- Leading to an unreasonable delay;
- Leading to the risk of loss of evidential material;
- Placing a member of staff from any agency at risk.

Ensure that parents have an understanding of the responsibilities placed on the school and staff for safeguarding children.

10. RECORD KEEPING

When a child has made a disclosure, the member of staff/volunteer should:

- Record as soon as possible after the conversation. Use the school record of concern sheet wherever possible. (pro-forma available on the Hertfordshire Grid for Learning)
- Don't destroy the original notes in case they are needed by a court
- Record the date, time, place and any noticeable non-verbal behaviour and the words used by the child
- Draw a diagram to indicate the position of any injuries
- Record statements and observations rather than interpretations or assumptions

All records need to be given to the Designated Senior Person promptly. No copies should be retained by the member of staff or volunteer.

The Designated Senior Person will ensure that all safeguarding records are managed in accordance with the Education (Pupil Information) (England) Regulations 2005.

11. ALLEGATIONS INVOLVING SCHOOL STAFF/VOLUNTEERS

An allegation is any information which indicates that a member of staff/volunteer may have:

- Behaved in a way that has, or may have harmed a child
- Possibly committed a criminal offence against/related to a child
- Behaved towards a child or children in a way which indicates s/he would pose a risk of harm if they work regularly or closely with children

This applies to any child the member of staff/volunteer has contact within their personal, professional or community life.

To reduce the risk of allegations, all staff should be aware of safer working practice and should be familiar with the guidance contained in the staff handbook, school code of conduct or Government document '*Guidance for Safer Working Practice for Adults who work with Children and Young People in Education Settings*'.

The person to whom an allegation is first reported should take the matter seriously and keep an open mind. S/he should not investigate or ask leading questions if seeking clarification; it is important not to make assumptions. Confidentiality should not be promised and the person should be advised that the concern will be shared on a 'need to know' basis only.

Actions to be taken include making an immediate written record of the allegation using the informant's words - including time, date and place where the alleged incident took

place, brief details of what happened, what was said and who was present. This record should be signed, dated and immediately passed on to the Head Teacher.

If the concerns are about the Head Teacher, then the Chair of Governors should be contacted. The Chair of Governors in this school is:

NAME: CONTACT NUMBER:

Mrs Sarah Hughes c/o 01442 426300

In the absence of the Chair of Governors, the Vice Chair should be contacted. The Vice Chair in this school is:

NAME: CONTACT NUMBER:

Mr Jonathan Lee c/o 01442 426300

The recipient of an allegation must **not** unilaterally determine its validity, and failure to report it in accordance with procedures is a potential disciplinary matter.

The Head Teacher will not investigate the allegation itself, or take written or detailed statements, but will assess whether it is necessary to refer the concern to the Local Authority Designated Officer:

Children's Services – 03001234043
SOOHS (Out of Hours Service-Children's Services) - 03001234043

If the allegation meets any of the three criteria set out at the start of this section, contact should always be made with the Local Authority Designated Officer without delay.

If it is decided that the allegation meets the threshold for safeguarding, this will take place in accordance with section 4.1 of the Hertfordshire Safeguarding Children Board Inter-agency Child Protection and Safeguarding Children Procedures.

If it is decided that the allegation does not meet the threshold for safeguarding, it will be handed back to the employer for consideration via the school's internal procedures.

The Head Teacher should, as soon as possible, **following briefing** from the Local Authority Designated Officer inform the subject of the allegation.

For further information see:

HSCB Inter-agency Child Protection and Safeguarding Children Procedures (Electronic)
Section 4.1 Managing Allegations Against Adults who work with Children and Young People

APPENDIX 1 - INDICATORS OF HARM

PHYSICAL ABUSE

Physical abuse may involve hitting, shaking, throwing, poisoning, burning or scalding, drowning, suffocating, or otherwise causing physical harm to a child.

Physical harm may also be caused when a parent or carer fabricates the symptoms of, or deliberately induces, illness in a child.

Indicators in the child

Bruising

It is often possible to differentiate between accidental and inflicted bruises. The following must be considered as non accidental unless there is evidence or an adequate explanation provided:

- Bruising in or around the mouth
- Two simultaneous bruised eyes, without bruising to the forehead, (rarely accidental, though a single bruised eye can be accidental or abusive)
- Repeated or multiple bruising on the head or on sites unlikely to be injured accidentally, for example the back, mouth, cheek, ear, stomach, chest, under the arm, neck, genital and rectal areas
- Variation in colour possibly indicating injuries caused at different times
- The outline of an object used e.g. belt marks, hand prints or a hair brush
- Linear bruising at any site, particularly on the buttocks, back or face
- Bruising or tears around, or behind, the earlobe/s indicating injury by pulling or twisting
- Bruising around the face
- Grasp marks to the upper arms, forearms or leg
- Petechae haemorrhages (pinpoint blood spots under the skin.) Commonly associated with slapping, smothering/suffocation, strangling and squeezing

Fractures

Fractures may cause pain, swelling and discolouration over a bone or joint. It is unlikely that a child will have had a fracture without the carers being aware of the child's distress. If the child is not using a limb, has pain on movement and/or swelling of the limb, there may be a fracture.

There are grounds for concern if:

- The history provided is vague, non-existent or inconsistent
- There are associated old fractures
- Medical attention is sought after a period of delay when the fracture has caused symptoms such as swelling, pain or loss of movement

Rib fractures are only caused in major trauma such as in a road traffic accident, a severe shaking injury or a direct injury such as a kick.

Skull fractures are uncommon in ordinary falls, i.e. from three feet or less. The injury is usually witnessed, the child will cry and if there is a fracture, there is likely to be swelling

on the skull developing over 2 to 3 hours. All fractures of the skull should be taken seriously.

Mouth Injuries

Tears to the frenulum (tissue attaching upper lip to gum) often indicates force feeding of a baby or a child with a disability. There is often finger bruising to the cheeks and around the mouth. Rarely, there may also be grazing on the palate.

Poisoning

Ingestion of tablets or domestic poisoning in children under 5 is usually due to the carelessness of a parent or carer, but it may be self harm even in young children.

Fabricated or Induced Illness

Professionals may be concerned at the possibility of a child suffering significant harm as a result of having illness fabricated or induced by their carer. Possible concerns are:

- Discrepancies between reported and observed medical conditions, such as the incidence of fits
- Attendance at various hospitals, in different geographical areas
- Development of feeding / eating disorders, as a result of unpleasant feeding interactions
- The child developing abnormal attitudes to their own health
- Non organic failure to thrive - a child does not put on weight and grow and there is no underlying medical cause
- Speech, language or motor developmental delays
- Dislike of close physical contact
- Attachment disorders
- Low self esteem
- Poor quality or no relationships with peers because social interactions are restricted
- Poor attendance at school and under-achievement

Bite Marks

Bite marks can leave clear impressions of the teeth when seen shortly after the injury has been inflicted. The shape then becomes a more defused ring bruise or oval or crescent shaped. Those over 3cm in diameter are more likely to have been caused by an adult or older child.

A medical/dental opinion, preferably within the first 24 hours, should be sought where there is any doubt over the origin of the bite.

Burns and Scalds

It can be difficult to distinguish between accidental and non-accidental burns and scalds. Scalds are the most common intentional burn injury recorded.

Any burn with a clear outline may be suspicious e.g. circular burns from cigarettes, linear burns from hot metal rods or electrical fire elements, burns of uniform depth over a large area, scalds that have a line indicating immersion or poured liquid.

Old scars indicating previous burns/scalds which did not have appropriate treatment or adequate explanation. Scalds to the buttocks of a child, particularly in the absence of burns to the feet, are indicative of dipping into a hot liquid or bath.

The following points are also worth remembering:

- A responsible adult checks the temperature of the bath before the child gets in.
- A child is unlikely to sit down voluntarily in a hot bath and cannot accidentally scald its bottom without also scalding his or her feet.
- A child getting into too hot water of his or her own accord will struggle to get out and there will be splash marks

Scars

A large number of scars or scars of different sizes or ages, or on different parts of the body, or unusually shaped, may suggest abuse.

Emotional/behavioural presentation

Refusal to discuss injuries

Admission of punishment which appears excessive

Fear of parents being contacted and fear of returning home

Withdrawal from physical contact

Arms and legs kept covered in hot weather

Fear of medical help

Aggression towards others

Frequently absent from school

An explanation which is inconsistent with an injury

Several different explanations provided for an injury

Indicators in the parent

May have injuries themselves that suggest domestic violence

Not seeking medical help/unexplained delay in seeking treatment

Reluctant to give information or mention previous injuries

Absent without good reason when their child is presented for treatment

Disinterested or undisturbed by accident or injury

Aggressive towards child or others

Unauthorised attempts to administer medication

Tries to draw the child into their own illness.

Past history of childhood abuse, self harm, somatising disorder or false allegations of physical or sexual assault

Parent/carer may be over involved in participating in medical tests, taking temperatures and measuring bodily fluids

Observed to be intensely involved with their children, never taking a much needed break nor allowing anyone else to undertake their child's care.

May appear unusually concerned about the results of investigations which may indicate physical illness in the child

Wider parenting difficulties may (or may not) be associated with this form of abuse.

Parent/carer has convictions for violent crimes.

Indicators in the family/environment

Marginalised or isolated by the community

History of mental health, alcohol or drug misuse or domestic violence

History of unexplained death, illness or multiple surgery in parents and/or siblings of the family

Past history of childhood abuse, self harm, somatising disorder or false allegations of physical or sexual assault or a culture of physical chastisement.

EMOTIONAL ABUSE

Emotional abuse is the persistent emotional maltreatment of a child such as to cause severe and persistent adverse effects on the child's emotional development. It may involve conveying to children that they are worthless or unloved, inadequate, or valued only insofar as they meet the needs of another person.

It may include not giving the child opportunities to express their views, deliberately silencing them or 'making fun' of what they say or how they communicate.

It may feature age or developmentally inappropriate expectations being imposed on children. These may include interactions that are beyond the child's developmental capability, as well as overprotection and limitation of exploration and learning, or preventing the child participating in normal social interaction.

It may involve seeing or hearing the ill-treatment of another. It may involve serious bullying (including cyberbullying), causing children frequently to feel frightened or in danger, or the exploitation or corruption of children.

Some level of emotional abuse is involved in all types of maltreatment of a child, though it may occur alone.

Indicators in the child

Developmental delay

Abnormal attachment between a child and parent/carer e.g. anxious, indiscriminate or no attachment

Aggressive behaviour towards others

Child scapegoated within the family

Frozen watchfulness, particularly in pre-school children

Low self esteem and lack of confidence

Withdrawn or seen as a 'loner' - difficulty relating to others

Over-reaction to mistakes

Fear of new situations

Inappropriate emotional responses to painful situations

Neurotic behaviour (e.g. rocking, hair twisting, thumb sucking)

Self harm

Fear of parents being contacted

Extremes of passivity or aggression

Drug/solvent abuse

Chronic running away

Compulsive stealing

Low self-esteem

Air of detachment – 'don't care' attitude

Social isolation – does not join in and has few friends

Depression, withdrawal

Behavioural problems e.g. aggression, attention seeking, hyperactivity, poor attention

Low self esteem, lack of confidence, fearful, distressed, anxious

Poor peer relationships including withdrawn or isolated behaviour

Indicators in the parent

Domestic abuse, adult mental health problems and parental substance misuse may be features in families where children are exposed to abuse.

Abnormal attachment to child e.g. overly anxious or disinterest in the child

Scapegoats one child in the family

Imposes inappropriate expectations on the child e.g. prevents the child's developmental exploration or learning, or normal social interaction through overprotection.

Wider parenting difficulties may (or may not) be associated with this form of abuse.

Indicators of in the family/environment

Lack of support from family or social network.

Marginalised or isolated by the community.

History of mental health, alcohol or drug misuse or domestic violence.

History of unexplained death, illness or multiple surgery in parents and/or siblings of the family

Past history of childhood abuse, self harm, somatising disorder or false allegations of physical or sexual assault or a culture of physical chastisement.

NEGLECT

Neglect is the persistent failure to meet a child's basic physical and/or psychological needs, likely to result in the serious impairment of the child's health or development. Neglect may occur during pregnancy as a result of maternal substance abuse.

Once a child is born, neglect may involve a parent or carer failing to:

- ***provide adequate food, clothing and shelter (including exclusion from home or abandonment);***
- ***protect a child from physical and emotional harm or danger;***
- ***ensure adequate supervision (including the use of inadequate care-givers);***
or
- ***ensure access to appropriate medical care or treatment.***

It may also include neglect of, or unresponsiveness to, a child's basic emotional needs.

Indicators in the child

Physical presentation

Failure to thrive or, in older children, short stature

Underweight

Frequent hunger

Dirty, unkempt condition

Inadequately clothed, clothing in a poor state of repair

Red/purple mottled skin, particularly on the hands and feet, seen in the winter due to cold

Swollen limbs with sores that are slow to heal, usually associated with cold injury

Abnormal voracious appetite

Dry, sparse hair

Recurrent / untreated infections or skin conditions e.g. severe nappy rash, eczema or persistent head lice / scabies/ diarrhoea

Unmanaged / untreated health / medical conditions including poor dental health

Frequent accidents or injuries

Development

General delay, especially speech and language delay

Inadequate social skills and poor socialization

Emotional/behavioural presentation

Attachment disorders

Absence of normal social responsiveness

Indiscriminate behaviour in relationships with adults

Emotionally needy

Compulsive stealing

Constant tiredness

Frequently absent or late at school

Poor self esteem

Destructive tendencies

Thrives away from home environment

Aggressive and impulsive behaviour

Disturbed peer relationships

Self harming behaviour

Indicators in the parent

Dirty, unkempt presentation

Inadequately clothed

Inadequate social skills and poor socialisation

Abnormal attachment to the child .e.g. anxious

Low self esteem and lack of confidence

Failure to meet the basic essential needs e.g. adequate food, clothes, warmth, hygiene

Failure to meet the child's health and medical needs e.g. poor dental health; failure to attend or keep appointments with health visitor, GP or hospital; lack of GP registration; failure to seek or comply with appropriate medical treatment; failure to address parental substance misuse during pregnancy

Child left with adults who are intoxicated or violent

Child abandoned or left alone for excessive periods

Wider parenting difficulties, may (or may not) be associated with this form of abuse

Indicators in the family/environment

History of neglect in the family

Family marginalised or isolated by the community.

Family has history of mental health, alcohol or drug misuse or domestic violence.

History of unexplained death, illness or multiple surgery in parents and/or siblings of the family

Family has a past history of childhood abuse, self harm, somatising disorder or false allegations of physical or sexual assault or a culture of physical chastisement.

Dangerous or hazardous home environment including failure to use home safety equipment; risk from animals

Poor state of home environment e.g. unhygienic facilities, lack of appropriate sleeping arrangements, inadequate ventilation (including passive smoking) and lack of adequate heating

Lack of opportunities for child to play and learn

SEXUAL ABUSE

Sexual abuse involves forcing or enticing a child or young person to take part in sexual activities, not necessarily involving a high level of violence, whether or not the child is aware of what is happening.

The activities may involve physical contact, including assault by penetration (for example, rape or oral sex) or non-penetrative acts such as masturbation, kissing, rubbing and touching outside of clothing.

They may also include non-contact activities, such as involving children in looking at, or in the production of, sexual images, watching sexual activities, encouraging children to behave in sexually inappropriate ways, or grooming a child in preparation for abuse (including via the internet).

Sexual abuse is not solely perpetrated by adult males. Women can also commit acts of sexual abuse, as can other children.

Indicators in the child

Physical presentation

Urinary infections, bleeding or soreness in the genital or anal areas

Recurrent pain on passing urine or faeces

Blood on underclothes

Sexually transmitted infections

Vaginal soreness or bleeding

Pregnancy in a younger girl where the identity of the father is not disclosed and/or there is secrecy or vagueness about the identity of the father

Physical symptoms such as injuries to the genital or anal area, bruising to buttocks, abdomen and thighs, sexually transmitted disease, presence of semen on vagina, anus, external genitalia or clothing

Emotional/behavioural presentation

Makes a disclosure.

Demonstrates sexual knowledge or behaviour inappropriate to age/stage of development, or that is unusually explicit

Inexplicable changes in behaviour, such as becoming aggressive or withdrawn

Self-harm - eating disorders, self mutilation and suicide attempts

Poor self-image, self-harm, self-hatred
Reluctant to undress for PE
Running away from home
Poor attention / concentration (world of their own)
Sudden changes in school work habits, become truant
Withdrawal, isolation or excessive worrying
Inappropriate sexualised conduct
Sexually exploited or indiscriminate choice of sexual partners
Wetting or other regressive behaviours e.g. thumb sucking
Draws sexually explicit pictures
Depression

Indicators in the parents

Comments made by the parent/carer about the child.
Lack of sexual boundaries
Wider parenting difficulties or vulnerabilities
Grooming behaviour
Parent is a sex offender

Indicators in the family/environment

Marginalised or isolated by the community.
History of mental health, alcohol or drug misuse or domestic violence.
History of unexplained death, illness or multiple surgery in parents and/or siblings of the family
Past history of childhood abuse, self harm, somatising disorder or false allegations of physical or sexual assault or a culture of physical chastisement.
Family member is a sex offender.

Part one: Safeguarding information for all staff

What school and college staff should know and do

1. Safeguarding and promoting the welfare of children is defined for the purposes of this guidance as: protecting children from maltreatment; preventing impairment of children's health or development; ensuring that children grow up in circumstances consistent with the provision of safe and effective care; and taking action to enable all children to have the best outcomes.
2. Children includes everyone under the age of 18.
3. Where a child is suffering significant harm, or is likely to do so, action should be taken to protect that child.¹ Action should also be taken to promote the welfare of a child in need of additional support, even if they are not suffering harm or are at immediate risk.²

The role of the school or college

4. Everyone who comes into contact with children and their families has a role to play in safeguarding children. School and college staff are particularly important as they are in a position to identify concerns early and provide help for children, to prevent concerns from escalating. Schools and colleges and their staff form part of the wider safeguarding system for children. This system is described in statutory guidance *Working Together to Safeguard Children 2013*.³ Schools and colleges should work with social care, the police, health services and other services to promote the welfare of children and protect them from harm.
5. Each school and college should have a designated safeguarding lead who will provide support to staff members to carry out their safeguarding duties and who will liaise closely with other services such as children's social care.

The role of school and college staff

6. The *Teacher Standards 2012*⁴ state that teachers, including headteachers, should safeguard children's wellbeing and maintain public trust in the teaching profession as part of their professional duties.

¹ Such action might be taken under section 47 and section 44 of the Children Act 1989.

² Such action might be taken under section 17 of the Children Act 1989.

³ Department for Education guidance: [Working Together to Safeguard Children 2013](#)

⁴ The Teachers' Standards apply to: trainees working towards QTS; all teachers completing their statutory induction period (newly qualified teachers [NQTs]); and teachers in maintained schools, including maintained special schools, who are covered by the 2012 appraisal regulations.

7. All school and college staff have a responsibility to provide a safe environment in which children can learn.
8. All school and college staff have a responsibility to identify children who may be in need of extra help or who are suffering, or are likely to suffer, significant harm. All staff then have a responsibility to take appropriate action, working with other services as needed.
9. In addition to working with the designated safeguarding lead staff members should be aware that they may be asked to support social workers to take decisions about individual children.

What school and college staff need to know

10. All staff members should be aware of systems within their school or college which support safeguarding and these should be explained to them as part of staff induction. This includes: the school's or college's child protection policy; the school's or college's staff behaviour policy (sometimes called a code of conduct); and the designated safeguarding lead.
11. All staff members should also receive appropriate child protection training which is regularly updated.

What school and college staff should look out for

12. All school and college staff members should be aware of the signs of abuse and neglect so that they are able to identify cases of children who may be in need of help or protection.
13. Staff members working with children are advised to maintain an attitude of 'it could happen here' where safeguarding is concerned. When concerned about the welfare of a child, staff members should always act in the interests of the child.
14. There are various expert sources of advice on the signs of abuse and neglect. Each area's Local Safeguarding Children Board (LSCB) should be able to advise on useful material, including training options. One good source of advice is provided on the [NSPCC website](#). Types of abuse and neglect, and examples of specific safeguarding issues, are described in paragraphs 20-25.⁵
15. Knowing what to look for is vital to the early identification of abuse and neglect. If staff members are unsure they should always speak to children's social care.
16. A child going missing from education is a potential indicator of abuse or neglect. School and college staff members should follow the school's or college's procedures for

⁵ Department for Education (DfE) [training materials on neglect](#)

dealing with children who go missing from education, particularly on repeat occasions, to help identify the risk of abuse and neglect including sexual abuse or exploitation and to help prevent the risks of their going missing in future. More information can be found in this [guidance about children who run away or go missing from home or care](#).

What school and college staff should do if they have concerns about a child

17. If staff members have concerns about a child they should raise these with the school's or college's designated safeguarding lead. This also includes situations of abuse which may involve staff members. The safeguarding lead will usually decide whether to make a referral to children's social care, but it is important to note that any staff member can refer their concerns to children's social care directly.⁶ Where a child and family would benefit from coordinated support from more than one agency (for example education, health, housing, police) there should be an inter-agency assessment. These assessments should identify what help the child and family require to prevent needs escalating to a point where intervention would be needed via a statutory assessment under the Children Act 1989. The early help assessment should be undertaken by a lead professional who could be a teacher, special educational needs coordinator, General Practitioner (GP), family support worker, and/or health visitor.

18. If, at any point, there is a risk of immediate serious harm to a child a referral should be made to children's social care immediately. Anybody can make a referral. If the child's situation does not appear to be improving the staff member with concerns should press for re-consideration. Concerns should always lead to help for the child at some point.

19. It is important for children to receive the right help at the right time to address risks and prevent issues escalating. Research and Serious Case Reviews have repeatedly shown the dangers of failing to take effective action. Poor practice includes: failing to act on and refer the early signs of abuse and neglect, poor record keeping, failing to listen to the views of the child, failing to re-assess concerns when situations do not improve, sharing information too slowly and a lack of challenge to those who appear not to be taking action.⁷

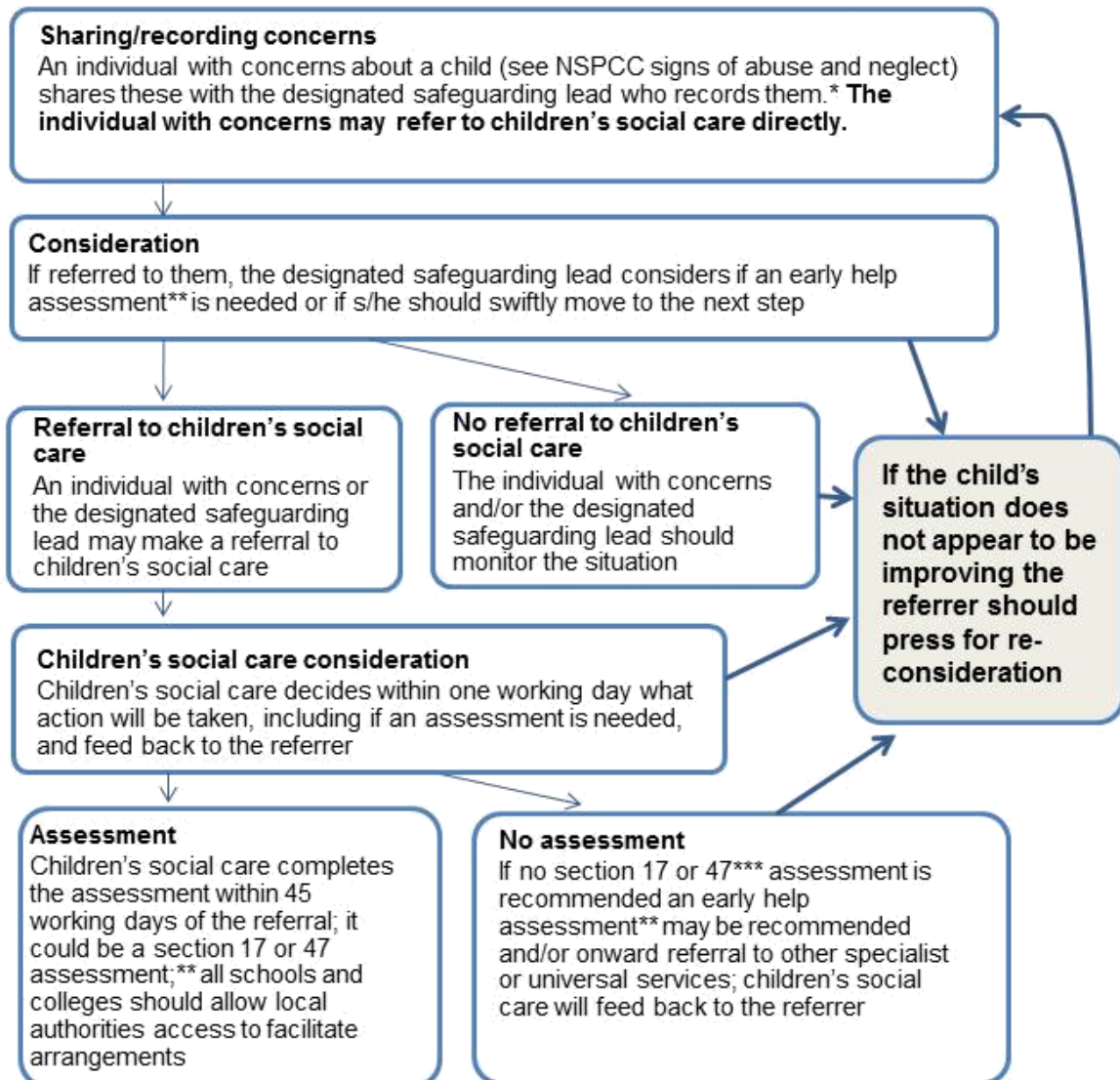
⁶ [Advice on whistleblowing](#) can be found on GOV.UK

⁷ [Brandon et al, Learning from Serious Case Reviews \(SCRs\) 2011](#)

Action when a child has suffered or is likely to suffer harm

This diagram illustrates what action should be taken and who should take it when there are concerns about a child. If, at any point, there is a risk of immediate serious harm to a child a referral should be made to children's social care immediately.

Anybody can make a referral.



* In cases which also involve an allegation of abuse against a staff member, see part four of this guidance which explains action the school or college should take in respect of the staff member

** Where a child and family would benefit from coordinated support from more than one agency (eg, education, health, housing, police) there should be an inter-agency assessment. These assessments should identify what help the child and family require to prevent needs escalating to a point where intervention would be needed via a statutory assessment under the Children Act 1989. The early help assessment should be undertaken by a lead professional who could be a teacher, special educational needs coordinator, General Practitioner (GP), family support worker, and/or health visitor.

*** Where there are more complex needs, help may be provided under section 17 of the Children Act 1989 (children in need). Where there are child protection concerns local authority services must make enquiries and decide if any action must be taken under section 47 of the Children Act 1989.

Types of abuse and neglect

20. **Abuse:** a form of maltreatment of a child. Somebody may abuse or neglect a child by inflicting harm, or by failing to act to prevent harm. They may be abused by an adult or adults or another child or children.

21. **Physical abuse:** a form of abuse which may involve hitting, shaking, throwing, poisoning, burning or scalding, drowning, suffocating or otherwise causing physical harm to a child. Physical harm may also be caused when a parent or carer fabricates the symptoms of, or deliberately induces, illness in a child.

22. **Emotional abuse:** the persistent emotional maltreatment of a child such as to cause severe and adverse effects on the child's emotional development. It may involve conveying to a child that they are worthless or unloved, inadequate, or valued only insofar as they meet the needs of another person. It may include not giving the child opportunities to express their views, deliberately silencing them or 'making fun' of what they say or how they communicate. It may feature age or developmentally inappropriate expectations being imposed on children. These may include interactions that are beyond a child's developmental capability as well as overprotection and limitation of exploration and learning, or preventing the child participating in normal social interaction. It may involve seeing or hearing the ill-treatment of another. It may involve serious bullying (including cyberbullying), causing children frequently to feel frightened or in danger, or the exploitation or corruption of children. Some level of emotional abuse is involved in all types of maltreatment of a child, although it may occur alone.

23. **Sexual abuse:** involves forcing or enticing a child or young person to take part in sexual activities, not necessarily involving a high level of violence, whether or not the child is aware of what is happening. The activities may involve physical contact, including assault by penetration (for example rape or oral sex) or non-penetrative acts such as masturbation, kissing, rubbing and touching outside of clothing. They may also include non-contact activities, such as involving children in looking at, or in the production of, sexual images, watching sexual activities, encouraging children to behave in sexually inappropriate ways, or grooming a child in preparation for abuse (including via the internet). Sexual abuse is not solely perpetrated by adult males. Women can also commit acts of sexual abuse, as can other children.

24. **Neglect:** the persistent failure to meet a child's basic physical and/or psychological needs, likely to result in the serious impairment of the child's health or development. Neglect may occur during pregnancy as a result of maternal substance abuse. Once a child is born, neglect may involve a parent or carer failing to: provide adequate food, clothing and shelter (including exclusion from home or abandonment); protect a child from physical and emotional harm or danger; ensure adequate supervision (including the use of inadequate care-givers); or ensure access to appropriate medical care or treatment. It may also include neglect of, or unresponsiveness to, a child's basic emotional needs.

Specific safeguarding issues

25. Expert and professional organisations are best placed to provide up-to-date guidance and practical support on specific safeguarding issues. For example NSPCC offers information for schools and colleges on the [TES website](#) and also on its own website www.nspcc.org.uk Schools and colleges can also access broad government guidance on the issues listed below via the GOV.UK website:

- [child sexual exploitation \(CSE\)](#) – see also below
- [bullying including cyberbullying](#)
- [domestic violence](#)
- [drugs](#)
- [fabricated or induced illness](#)
- [faith abuse](#)
- [female genital mutilation \(FGM\)](#) – see also below
- [forced marriage](#)
- [gangs and youth violence](#)
- [gender-based violence/violence against women and girls \(VAWG\)](#)
- [mental health](#)
- [private fostering](#)
- [radicalisation](#)
- [sexting](#)
- [teenage relationship abuse](#)
- [trafficking](#)

Further information on Child Sexual Exploitation and Female Genital Mutilation

Child sexual exploitation(CSE) involves exploitative situations, contexts and relationships where young people receive something (for example food, accommodation, drugs, alcohol, gifts, money or in some cases simply affection) as a result of engaging in sexual activities. Sexual exploitation can take many forms ranging from the seemingly 'consensual' relationship where sex is exchanged for affection or gifts, to serious organised crime by gangs and groups. What marks out exploitation is an imbalance of power in the relationship. The perpetrator always holds some kind of power over the victim which increases as the exploitative relationship develops. Sexual exploitation involves varying degrees of coercion, intimidation or enticement, including unwanted pressure from peers to have sex, sexual bullying including cyberbullying and grooming.

However, it also important to recognise that some young people who are being sexually exploited do not exhibit any external signs of this abuse.

Female Genital Mutilation (FGM): professionals in all agencies, and individuals and groups in relevant communities, need to be alert to the possibility of a girl being at risk of FGM, or already having suffered FGM. There is a range of potential indicators that a child or young person may be at risk of FGM, which individually may not indicate risk but if there are two or more indicators present this could signal a risk to the child or young person. Victims of FGM are likely to come from a community that is known to practise FGM. Professionals should note that girls at risk of FGM may not yet be aware of the practice or that it may be conducted on them, so sensitivity should always be shown when approaching the subject. Warning signs that FGM may be about to take place, or may have already taken place, can be found on pages 11-12 of the Multi-Agency Practice Guidelines referred to above. Staff should activate local safeguarding procedures, using existing national and local protocols for multi-agency liaison with police and children's social care.

Policy Audit

Policy Child Protection
Committee School Improvement
Policy Owner Sarah Hughes

Date	Original Version Number	Amendment Made	Reason for Change	New Version Number	Committee Ratified Date	FGB Ratified Date
09/11/2012	3	Added page numbers	Clarity for future amendments	2012.11.26	12/11/2012	26.11.2012
		Pg 3, Section 3: Deputy Designated Senior Person - removed Claire Farmery and added Zoe Harding	CF left school, ZH is Family Liaison Manager			
26/09/2013		Pg 3, Section 3: Change designated persons.	New Headteacher and DSP	2013.09.26		
07/01/2015		Pg 3, Section 3: Change designated persons.	New Deputy DSP	2015.01/07		

