



A Message from the Headteacher, Mrs Skeggs

Welcome to Peartree Spring Primary School. I hope that the information in this prospectus will give you a picture of our vision, aims and values that we uphold.

Whilst we place a great emphasis on standards of Maths, Literacy and other core subjects, we also aim to develop the whole child through our creative curriculum. Children at our school are enthusiastic, confident and independent learners, who achieve well both academically and socially.

Our School Council plays an active role in our school, where the voice of the child is paramount.

We have a range of 'out of school hours' provision for children, including a breakfast and after school club.

Peartree Spring Primary School prides itself on being fully inclusive, with high expectations and aspirations for all pupils.

If you would like further information about any aspect of our school, or you would like to arrange to visit us, please contact the school office on 01438 233900.



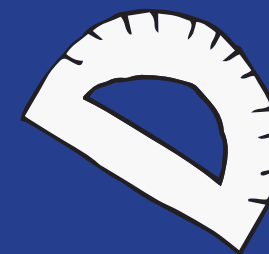
School Council Welcome

We are the School Council, the children's voice of the school. Welcome to Peartree Spring Primary School.

We are voted for by our class members and we are responsible for making sure that all children have a say. One of our special jobs is to organise events that raise money for our school and to help others. When we meet weekly, we bring all the suggestions and comments from the children in our class to be discussed. We make sure that everyone is safe and happy and we all look after each other here. This is a brilliant school and we hope you like it!



Striving for Excellence



Our Vision

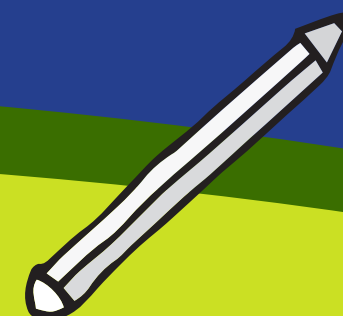
At Peartree Spring Primary School we provide a stimulating, safe environment in which we nurture every learner, in order for them to realise their full potential. We believe all individuals have the right to learn and acquire the skills to become a well-rounded, confident member of the community. We have an inclusive and understanding ethos that provides excellence and enjoyment where every learner matters.

Our Aims:

- To provide high quality teaching and learning, through a broad and balanced curriculum, that stimulates and challenges all learners.
- To provide a safe, nurturing environment in which everyone is valued and respected.
- To promote a healthy lifestyle and positive attitude.
- To develop independence, self-esteem and foster a positive attitude to learning.
- To build and maintain effective relationships, in order to prepare children to make a worth while contribution to society.

Our Mission:

Learn, Believe, Achieve.



Every Child Matters at Peartree Spring Primary School



Safeguarding

Peartree Spring Primary School, like any other school, will take reasonable action to ensure the safety of our pupils. In situations where there are indications that a child might either be neglected, or subject to abuse, the Headteacher has a legal duty to follow Hertfordshire Safeguarding procedures. All staff and volunteers are subject to enhanced DBS.

Equal Opportunities

We do not discriminate against anyone, be they staff, pupil or parent, on the grounds of ethnicity, religion, attainment, age, disability, gender or background.

We seek to ensure that all pupils have equal access to the full range of educational opportunities provided by the school.

We constantly strive to remove any forms of indirect discrimination that may form barriers to learning for some groups.

Inclusion

The school hopes to provide a broad and balanced range of learning experiences for all children. We want each child to recognise their strengths and weaknesses and develop their own sense of self-esteem.

At Peartree Spring Primary School we identify barriers to learning and provide an appropriately differentiated curriculum to meet the diverse needs of all learners. We value, recognise and celebrate all achievements and work with parents and carers effectively to support a child's education.



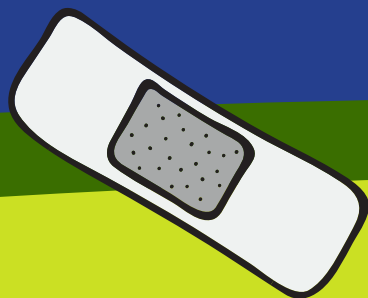
Medical needs, accidents and health issues

The health and welfare of children in our school is closely monitored. Children will receive health checks, carried out by the school nurse at regular intervals:

- Vision
- Dental
- Audiology (Hearing)
- Height and Weight

Basic first aid will be given to your child, should they become ill or injured whilst at school. We will inform you immediately if we think your child is not well enough to be in school. If your child is on medication that cannot be administered solely at home, this should be brought to the attention of a member of the office staff and the appropriate forms completed.

PLEASE NOTE THAT MEDICINE SHOULD NEVER BE GIVEN TO A CHILD TO BE BROUGHT INTO SCHOOL.



Staffing

We are a three form entry school with a maximum intake of 90. We have well-resourced classrooms with every class having an attached teaching assistant. In addition to this we also have several teaching assistants who work solely with individual pupils.

We employ a Specialist Sports Coach to enhance the teaching of PE and our children take part in the Wider Opportunities music lessons.

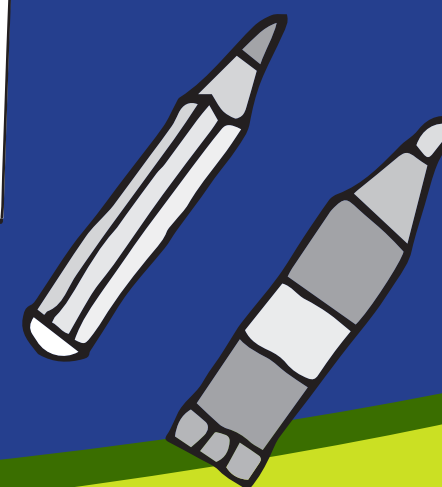
We have a Reception Unit that is staffed by both teachers and teaching assistants.

Curriculum

At Peartree Spring Primary School we provide a broad, balanced and creative curriculum. All children have the opportunity to take part in daily numeracy and literacy lessons as well as key foundation subjects to enhance their learning experience.

Children have access to a range of ICT resources including iPads, laptops and 'Radio Peartree'. These are used in all subjects.

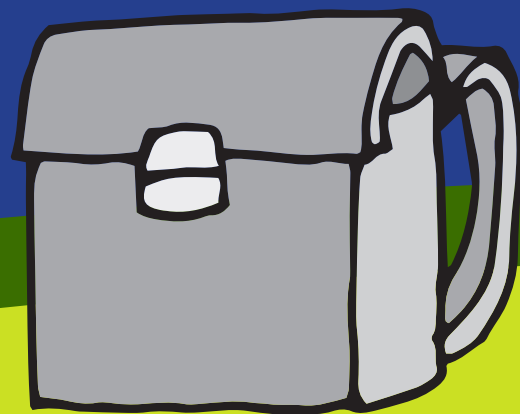
Children are actively encouraged to be independent learners and learn through a range of experiences including play, research, interaction and investigation. Our curriculum is further enriched by a range of school clubs and educational visits.



School Times

7.30am	Breakfast Club
8.50am	Start of the school day.
10.30 – 10.45am	Break
12.00 – 1.15pm	Reception Lunchtime
12.00 – 1.00pm	Years 3 and 4 Lunchtime
12.15 – 1.15pm	Years 1 and 2 Lunchtime
12.30 – 1.30pm	Years 5 and 6 Lunchtime
3.15pm	End of School Day
3.15 – 4.15pm	School Clubs

After School Club available until 6.00pm.



Assessment

Throughout their school career at Peartree Spring Primary School, continuous monitoring takes place.

In Reception, children are assessed against the profile and Early Learning Goals.

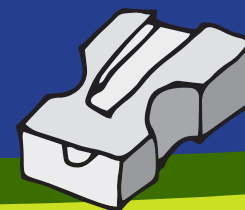
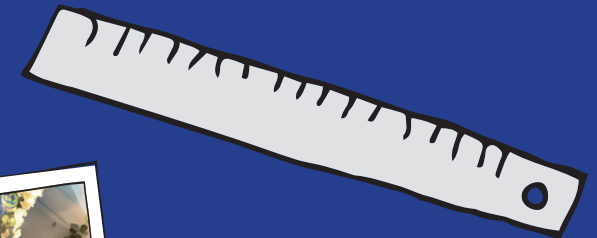
In Years 2 and 6, children complete compulsory SATs and in other year groups, assessment takes the form of teacher assessment.

Pupil progress is reviewed termly.

Behaviour

Our Rewards and Sanctions policy is based on an ethos of being kind, polite and respectful to all. Peartree Spring Primary School is a place where children can feel safe and secure in their learning and social development.

We expect children to behave in a safe and sensible manner, and to care about and look after both each other, and property that belongs to the school and fellow pupils. We reward good behaviour and effort with both Golden Time and Peartree Spring Primary School reward stationery, as well as 'Star Reader', 'Star Mathematician', 'Lunchtime Star of the Week', 'Star of the Week' and 'Star Children' from each class.



Attendance and Punctuality

At Peartree Spring Primary School, we believe that high standards of punctuality and attendance are crucial to children's learning and achievement in school.

All children should arrive at school by 8.50am. Lateness will be monitored. If your child is unable to attend school, the school office must be informed by 8.45am on each day of absence. Parents must ask for permission to take their children to both dental and medical appointments in school time, by completing a medical form available from the school office. Family holidays in term-time, or extended leave will not normally be approved, unless in special circumstances. Requests must be made in writing and addressed to the Headteacher. We liaise regularly with our Attendance Improvement Officer in order to improve and maintain standards.

Parental Involvement

At Peartree Spring Primary School, we believe that it is crucial to a child's development that the school and parents/carers work in partnership with each other. We consult parents on a wide range of issues and keep them informed by weekly newsletters, information on our school website, parent consultations and open afternoons. Parents also receive information via Schoolcomms/Schoolgateway, Twitter and Facebook.



Admissions

We admit children using the Hertfordshire guidelines and criteria. Admissions/In Year Admissions are administered through Hertfordshire County Council.

Visits to the school are warmly welcomed.

Out of School Hours

Children at Peartree Spring Primary School have access to an onsite Breakfast Club and After School Club that runs every day. We have a range of extra-curricular activities arranged by both the school and outside organisations.

Complaints

At Peartree Spring Primary School, we hope that all children and parents/carers will be happy in the school community. Parents are encouraged to speak to their child's class teacher or Year Group Leader with any initial concerns and with the Headteacher as appropriate. The Senior Leadership Team will do their best to resolve any issues, however, parents/carers are entitled to complain to both the Governing Body and Local Authority using the school complaints procedure.





PEARTREE SPRING
PRIMARY SCHOOL

Peartree Spring Primary School

Hydean Way
Stevenage
Hertfordshire
SG2 9GG

Tel: 01438 233900 **Fax:** 01438 233901

Email: admin@peartreespring.herts.sch.uk

Website: www.peartreespring.herts.sch.uk

