



# St John's Church of England Primary School Prospectus

A warm welcome from St John's Church of England Primary School Team



A very warm welcome to you, your child and the whole family, as you step through the virtual doors of St John's Church of England Primary School.

We have created this prospectus to tell you about life in our school. We hope it conveys our passion for serving the children and our community beyond the words on paper.

We are committed to our children and encourage all of our families to be partners in your child's learning, to ensure the very best start to their education. We hope that you will find the idea of being part of our school, in the very heart of our parish and community, an exciting one

The school is growing and is making a generous contribution to Watford by being an active member of the local community. We are all very much looking forward to continuing to develop



these positive relationships over the coming years and to supporting the positive outcome of all the children in our care.

Thank you for considering St John's Church of England Primary School for your child.



Miss Anna Pyatt, our Headteacher works with a dedicated staff team. All our staff know that they are part of something very special and have the interests of the children at the heart of all that they do. We value all of our staff and recognise that every single member of our team contributes to the success of our children. We recognise that happy staff equal happy children and happy children make happy learners.

A full staff list is available on our website via the following link:

<https://watfordstjohns.org/about/staff-team/>

## Our School Vision - Growing Together in Love and Respect



The school provides a unique educational experience for children in Watford through its Christian ethos, its understanding of the needs of the community and the needs of the pupils. We are wholly committed to providing high quality education and improvement of life chances for all where unique individuals and the school community can flourish.

*"To love God with all our heart and mind and to love our neighbour as ourselves"* Mark 12:29-31,

St John's is at the heart of a richly diverse community. The education and services we provide serve the whole community, valuing and making the most of its dynamic blend of ethnicity, languages, cultures and religions.

We welcome children from Christian families, from other faiths and from non faith backgrounds. The vision of St John's is based on core Christian values. These underpin all elements of school life, and enable every child to develop as a moral, social, spiritual human being.



Our Reception intake of 60 children, after children who are admitted with an Education, Health and Care Plan (EHCP) is split 50:50 between Children of the Christian Faith and Community places where places are allocated without reference to faith.

Inclusivity is a hallmark of St John's Church of England school: every child should be revered and respected as a member of a community where all are known and loved by God.

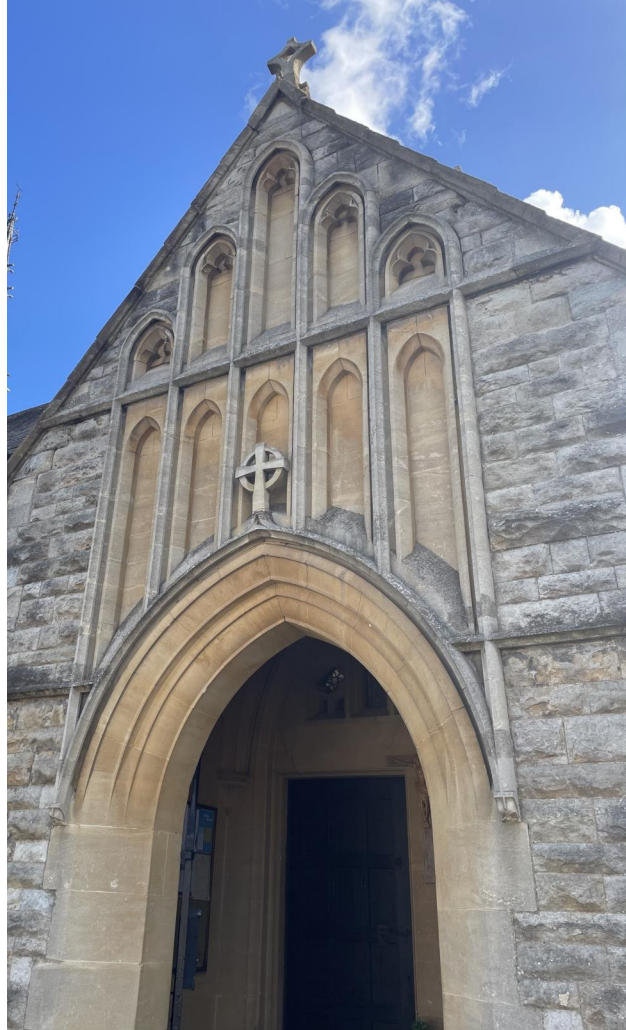
Every child, whatever their background, will be valued as a unique child of God, and will be enabled to grow in confidence and self-belief with the opportunity to reach for the skies.

## Our Inclusive School Community



**Our Church,** St John's Church, is a central part of our school community. Located on Sutton Road, in the heart of Watford, St John's Church strives to be a welcoming environment for all. We are very privileged to be able to invite our families to join with us in school services in the nearby church. If you have never visited St John's on Sutton Road, it is a beautiful building.





**Our Governing Body** is a group of volunteers led by our Chair of Governors, Robin Davis. The Governing Body is made up of variety of members of the community including Church, St John's School Staff Staff and St John's parents. They work in partnership with the Headteacher to maintain expected standards and promote continuous improvement of our school.



**Our PTA.** The Friends of St John's Church of England Primary School are the PTA which support St John's school by providing the links between home and school. The Friends fundraise by organising events such as cake sales, Community Fun Day to generate income for the added extras such as books for the school library, pantomimes and visits from Father Christmas, all of which enhances the children's learning and school experience. All St John's families are automatically members of The Friends of St John's and we look forward to your support and input.





## Our School Ethos





### Educational Excellence

The school provides a creative and challenging curriculum, which enables children to aim high with a clear emphasis on spoken English, reading, writing and maths.

### Development of the Whole Child

The school supports our children to become responsible and moral members of the community, to live well and to flourish as creative and inquisitive life-long learners. The school raises awareness of core British values and prepare children for life in modern Britain.

### Christian Ethos

The Christian ethos of loving your neighbour, respecting each other and valuing diversity is integral to school life. Our school enables all children to explore the Christian values through collective worship and prayer and have an understanding of people of faith.

### Community Spirit

The school has strong links to the Parish Church and wide community. We develop social responsibility through serving others in our community and build strong partnerships with parents to take part in school life and support the education of their children.

## Our School Values



Loving God and your neighbour in our worship, learning and our living

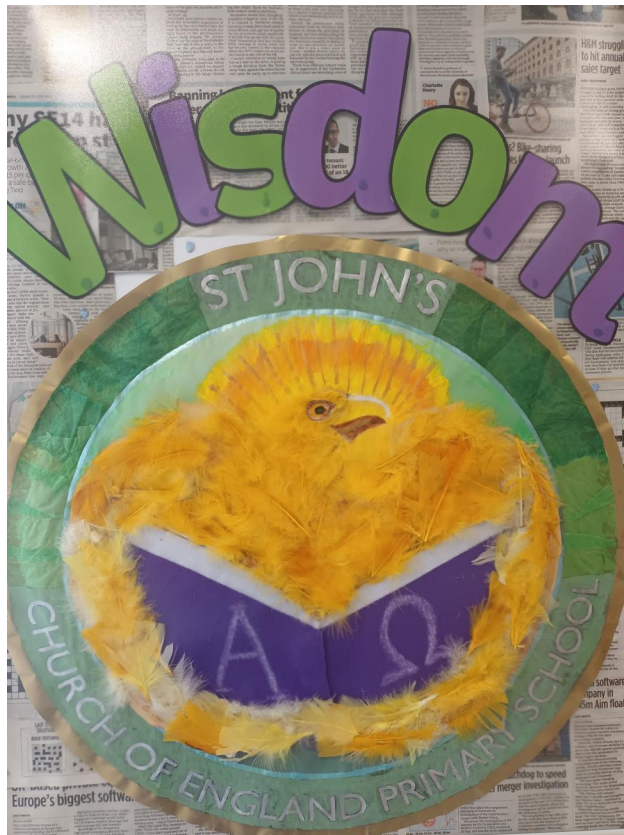
Respecting each other at school, at home and in the community

Value the diversity of all God's created order

Nurturing the love and desire to learn

Please click on the pictures below to see the posters of our school values, created with the children, which we display with pride within school.

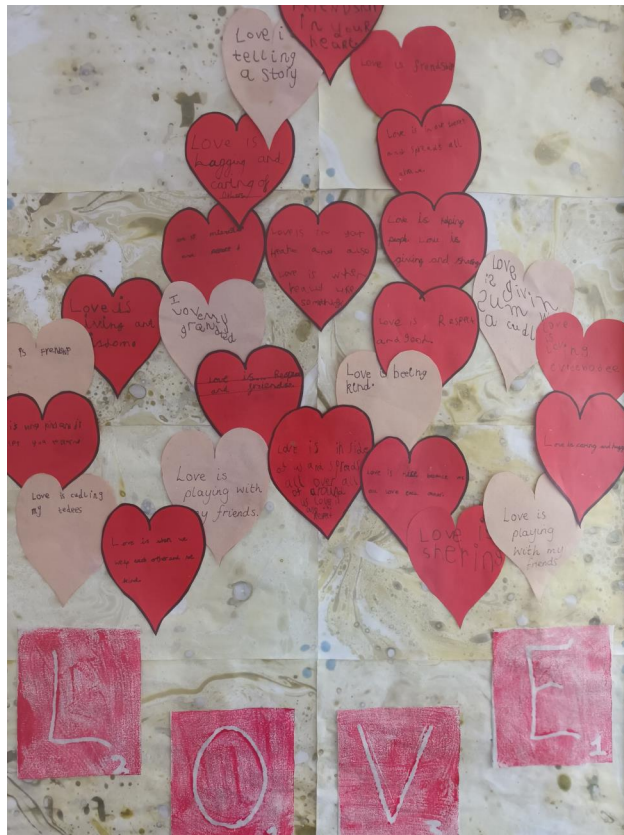








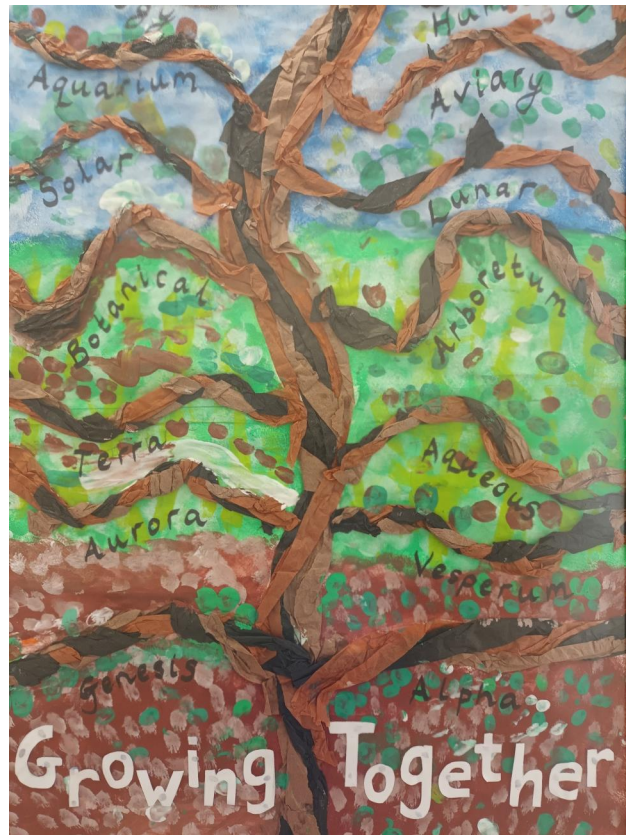












## A day in the life of St John's C of E Primary School





*1 - Children get ready for school by wearing their smart uniform and bringing their water bottle to school in their school bag.  
Please label all items clearly with your child.*

*For those families who need an earlier start to the school day, Breakfast Club is available from 7:45am. This wrap around  
childcare care is a paid for service.*

*We are a 'Walk to School' school. If parents must travel by car, please note that there is no parking at the school, nor is it  
possible to park on Clarendon Road itself or the surrounding streets. You may park free of charge at Sainsbury's and walk the  
rest of the way, or there are paid parking options closer to school.*





*2 - Members of the St John's school team will be outside the school building to welcome the children to school. Start time for Years 1-6 is 8:40am- 8:50am and the start time for Reception is 8:50am. Please support your child to arrive promptly and ready to start the school day.*



*3 - Morning lessons focus on the core subjects; English and Maths. For Early Years this will include phonics. PE lessons take place twice a week and your Class Teacher will confirm the PE days at the start of the school year. There is a break during the morning for snack time. Reception, Year One and Year Two receive a free piece of fruit /vegetable. Year 3-6 will have the option of bringing their own piece of fruit or veg to school each day. Children under five years old are entitled to free milk and milk can be purchased for older children.*



*4 - All St John's children have the option to have a cooked school lunch which is free in Reception, Year One and Year Two and paid for by all families from Year Three onwards. If you are in receipt of certain benefits then you may be entitled to Free School Meals (FSM). Please visit the Government website for more information (<https://www.gov.uk/apply-free-school-meals>)*

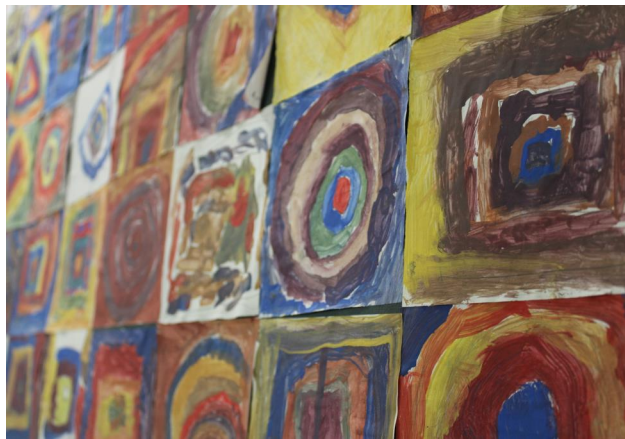
*We believe in the Christian tradition of breaking bread with each other. Grace is said before food is taken.*



*5 - During break time, all of the children have the chance to play outside, either on the main or rooftop playground. Break time is supervised by members of staff and the children are encouraged to play in safe and inclusive way.*



*6 - There is a daily act of Collective Worship which forms a central part of our day. They are led by the Headteacher, Class Teachers and invited visitors. Whole School Collective Worship is fully inclusive. There is no assumption of all pupils being expected to follow Christian beliefs. We use the Gospel teachings as a basis for teaching values such as Forgiveness, Love and Respect.*



*7 - Afternoon lessons incorporate other parts of the curriculum such as Art, Music and IT. More information about our school curriculum can be found on our website (<https://watfordstjohns.org/info-for-parents/curriculum>)*

*Your child's class may take part in their library session to receive their weekly reading book or learn to programme codes in computing using the school chromebooks.*





*8 - Collection times vary according to the year group, between 3:10pm for the Reception classes and 3:25pm for Year 6. A member of the teaching team will bring the children to be collected from the playground.*

*There are a variety of extra curricular After School clubs e.g football, dance, yoga available to different year groups.*

*For those of you who require childcare after school, our Eagle Club provision runs from the end of the school day until 5:30pm as a paid for service.*



9 - Term dates can be found on our school website via the following link: <https://watfordstjohns.org/info-for-parents/the-school-day/>. There are fourteen weeks of school holidays and we expect all families to take their holidays within those fourteen weeks . Absence during term time causes major interruption to a child's education and we only expect children to be absent when they are unwell.

## Our School Themes



These are the four key themes of the Early Years Foundation Stage framework for Reception. However, these themes continue throughout your child's journey at St John's.

**A Unique Child:** At St John's we recognise that every child is a competent learner who can be resilient, capable, confident and self assured. We use praise encouragement as well as celebration and a growth mindset approach, to encourage children to develop a positive attitude to learning.

**Positive Relationships:** It is important for children to learn to be strong, confident and independent from being in secure relationships. We aim to develop caring, respectful, professional relationships with the children and their families.

**Families as Partners:** Parents and carers are the children's first and most enduring educators and we value being partners with them during their child's St John's journey.

**Enabling Environments:** The children have daily access to an indoor and outdoor environment that supports all areas of learning.



Supporting children with SEND and additional needs



Some children require extra support at school. Your child may have social, emotional or medical needs that we will need to support them with whilst they are at school.

We encourage families of children who may have additional requirements to first speak to their child's class teacher to share any concerns that they may have.

If your child has a medically diagnosed allergy or needs to have medicine held in school, please make the school office aware and, depending on the severity of the allergy, we may arrange an appointment with Mrs Stevens.

If your child has an Educational, Health and Care Plan (EHCP), applications to our school should be made through the SEN officer at [Hertfordshire County Council](#).

Our Special Education Needs Coordinator (SENCo), Miss Stevens leads a small team of Learning Support Assistants (LSA) and Higher Level Teaching Assistants (HLTA) who all work together to meet the children's needs on a daily basis.



## Communication between Home and School



Communication between home and school enables school staff to work together with St John's families to support our children.

There are a number of chances for St John's families to receive regular updates on their child's progress as well as information about school life.

We host a Meet The Teacher evening at the beginning of every school year where families can meet your child's teacher and learn about the lessons and activities planned for the coming year.

A school newsletter is produced each week and emailed to all families. The newsletter provides information about key dates and school life. An overview about what children are learning

about in class is regularly shared with families either via Tapestry for Reception families and the Class Dojo app for Years 1-6.

Update on Learning meetings between Class Teachers and families take place twice a year to discuss your child's progress and every St John's family will receive an end of the year report providing full details of your child's learning for the school year.

We hold a virtual Parents Forum every term hosted by the Headteacher and the Chair of Governors.

The school office is the main point of contact between families and school. Our telephone number is 01923 255017 and the email address is [office@watfordstjohns.org](mailto:office@watfordstjohns.org). The office is open between 8:30am and 3:30pm, Monday to Friday.

Admissions - How to join our school



# first day at school



**Starting school in Reception at the start of the school year.**

All schools are part of the system coordinated by Hertfordshire Council Council. If your child is due to start in September 2025 ( children born between 1 September 2020 and 31 August 2021). You have to submit your application via the [Hertfordshire County Council](#) website by the deadline.

We host prospective parent tours in October and November each year and provide more detailed information then. Alternatively, you can visit the school and County Council's websites.

**Transferring to our School**

If you have recently moved to the area and would like to apply for a place at our school, you will need to make an In Year Application and provide evidence of your home address. The application form is available from the school website

<https://watfordstjohns.org/admissions/>

Thank you and how to contact us





Thank you very much for taking the time to read our school prospectus. We hope that this has given you an insight into our school. Please visit our website [watfordstjohns.org](http://watfordstjohns.org) if you would like more information.

We very much look forward to welcoming your child and your family to our school in the near future.

The school office is open for enquiries between 8:30am until 3:30pm, every school day, apart from the last day of each term when the whole school closes at 2pm.

The office is busiest at school drop off and pick up times. If your query is not urgent, we kindly ask that you call between 9:30 am and 2:00 pm.

Our telephone number is 01923 255017 and we have an answer machine in operation outside of the office hours.

The main email address for all correspondence is [office@watfordstjohns.org](mailto:office@watfordstjohns.org) - please ensure that your email contains all of the necessary information so that it can be directed to the correct member of staff in a timely manner.

We aim to respond to all email correspondence within 2 school days.



## Life at St John's C of E Primary School in pictures



Please click on the pictures below to view examples of life as part of our inclusive, energetic and engaging school community.











