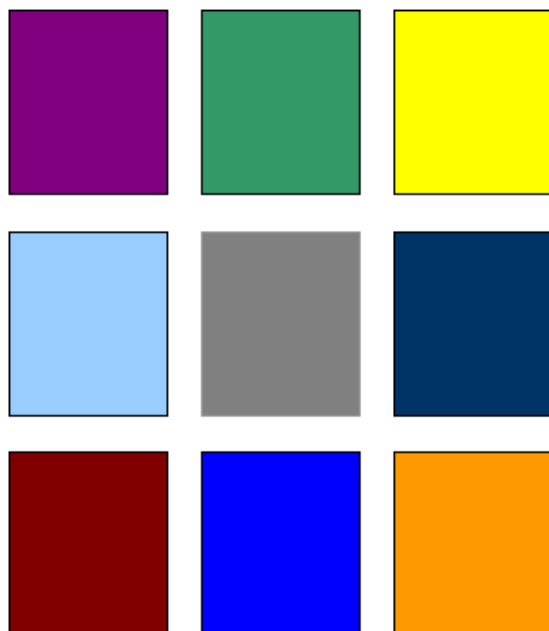


Lordship Farm Primary School



Prospectus



Welcome

Welcome to Lordship Farm Primary School . We hope this is the start of a long and happy association. We are all very proud of our school and hope that you will come to share that feeling with us. Through this handbook we have tried to set out a view of life at Lordship Farm, the activities and opportunities that are available to the children and practical points of procedure that you will need to know.

The prime aim of our school is to give each child the opportunity to develop their own potential, by laying the foundations of a balanced education.

We aim to help children understand the world, by giving them the basic skills of learning.

We teach children to appreciate the needs of others and to understand that both inside and outside the school, we have responsibilities as well as rights.

To succeed in these aims we need a close partnership between school and the home. We are a school for all the community and we welcome parents and local residents into the school .

*Ben Parry
Headteacher*



The School's Ethos

Lordship Farm is a happy, caring school in which children and adults are valued and respected. This is reflected in the way that we reward all those working in the school for their positive contributions.



We aim for a purposeful but relaxed atmosphere. We find that children work best in a calm, friendly environment where courtesy, common sense and consideration for others is expected.

We have a positive approach to behaviour and encourage children to consider others by learning self discipline and respect for others and for the school.

At Lordship Farm we offer a stimulating environment in which the efforts of children are valued.

We expect high standards in all aspects of school life i.e. in attitudes to learning and to other people, presentation of work and of self.



Safeguarding Statement

Lordship Farm is committed to safeguarding and promoting the welfare of its pupils and expects all staff and volunteers to share this commitment.

About the school

Lordship Farm opened as a County, co-educational day primary school in April 1973. The buildings were designed to house four open plan classrooms and over the years the school has expanded with classrooms being added in 2000 and 2002. In September 1997 Lordship Farm Voluntary Aided Nursery School became a part of the school.

There is a large hall, equipped for PE which is used for assemblies, drama and music. There is a separate dining area, a computer suite, library and music rooms. Outside there is an extensive playing field and two playgrounds and an 'outdoor' classroom. At the south eastern boundary there is a large area set aside as a wild conservation area and a large pond and bird hide.

The school is well resourced and all classes have access to ipads and Interactive whiteboards.

As a nursery, infant and junior school, Lordship Farm caters for up to eight years of schooling. All parents will be offered a September start in the Nursery from September 2014.

Children enter both the nursery and the main school in a single intake in September.



Lordship Farm has an admission number of 60.

Organisation of teaching and pupils' learning is varied and depends to a large extent upon the age of the children and the subject area being taught. Teaching within each area therefore may be on an individual, group or class basis.

Our school has recently been recognized for its commitment to the teaching of the arts, the promotion of healthy lifestyles and its work to develop international links through the award of Artsmark Gold, Healthy Schools accreditation and the British Council's International award.

The School's Organisation

Lordship Farm is co-educational and currently accommodates approximately 400 children. Allocation of children into classes is on a chronological basis.

Currently the school is organized as follows:

Each teacher is responsible for the education and pastoral care of the children in his or her class and may also take on an overall responsibility for a particular aspect of the school's curriculum. As an 'open plan' school we operate a 'team teaching' approach which means in practice that children may be taught by different teachers during the course of the week.

Admission Arrangements

<u>Key Stage</u>	<u>Class</u>	<u>No. of classes</u>	<u>Age group</u>
Foundation Stage	Nursery (Acorns)	2 (am and pm)	3-4
	Reception (Ash)	2	4-5
Key Stage 1	Year 1 (Beech)	2	5-6
	Year 2 (Chestnut)	2	6-7
Key stage 2	Year 3 (Maple)	2	7-8
	Year 4 (Oak)	2	8-9
	Year 5 (Sycamore)	2	9-10
	Year 6 (Willow)		10-11

We follow H.C.C.'s policy on admissions as described in the 'Admission to Primary Schools' booklet sent to all parents of 3 year old children by the County Council. Applications for school places in the Nursery are managed by the school whilst Reception places are managed centrally. Admissions other than in Reception and the Nursery are initially at the discretion of the school. We have a continuing interest list and apply the same admission criteria as the County Council.



Our Educational Aims

We aim to provide a broad, balanced and relevant curriculum. We will obviously teach your child the essential skills of reading, writing and mathematics but also we want to open the doors to a wide range of creative and physical activities and provide opportunities for our children to develop socially, emotionally and morally.

Specifically we aim :

- To ensure that children reach their full potential through a desire for high achievement.
- To extend children's knowledge of themselves and the world in which they live.
- To develop a range of skills and concepts and attitudes, to help them to become independent learners with an ability to work with others .
- To help our children develop enquiring minds, the ability to listen and question and argue rationally.
- To help our children to use number and language effectively.
- To help foster in our children attitudes of consideration, respect and tolerance towards each other.
- To emphasis that education is a partnership between child, parent and teacher.

We believe:

That children learn best from first hand experiences.

That children learn when they are interested.

That children have different learning styles

Frequent use is made of the school grounds and trips to local areas often provide a starting point for areas of work.

Emphasis is placed on the needs of the individual child.

Care is taken to stimulate the gifted and talented, while children with specific learning difficulties are given special attention. We encourage children to work towards their own maximum potential and make every effort to ensure each child is successful.



The Curriculum

At Lordship Farm we offer a broad, balanced and differentiated curriculum for all pupils. Our work is rooted in the needs of the individual child within the statutory framework of the National Curriculum. Our curriculum is carefully planned and evaluated to ensure that there is continuity and progression for the children as they move through the school.

The National Curriculum comprises of three core subjects, English, mathematics and science. These together with the foundation subjects of art and design, computing, design and technology, history, geography, music, physical education, modern foreign language, religious education and Personal, Social, Health, Moral and Citizenship Education, form the basic curriculum taught in school.

All teaching programmes are differentiated to meet the needs of individuals and specialist support is available for children for whom English is an additional language. Most areas of the curriculum are covered individually especially at KS2 although we try to make the children's learning more cohesive by making links across the curriculum wherever possible.

English

We develop pupils' spoken language, reading, writing and vocabulary as integral aspects of the teaching of every subject. English is both a subject in its own right and the medium for teaching other areas of the curriculum.



Reading

Our aim is that children leave our school as independent, fluent readers with a real love of books. We provide a variety of quality children's literature, as well as carefully chosen 'scheme' books to support reading development. Each class has a well stocked reading area that offers a range of genres and difficulties of text. Reading is taught in a variety of ways- whole class teaching and guided reading in groups. In the early years basic reading skills are taught through a structured 'phonics' programme. In addition, children read with their teacher on an individual basis and to other adults as resources allow. The children will bring home a reading book everyday and their daily reading at home should be recorded in their Home/School book, along with any parental comments.

Writing

Writing is seen as a vital tool for success in life. Children are encouraged to write independently and emphasis is placed on developing lively, descriptive, well-structured writing. We write for a variety of purposes and for differing audiences. Writing may take the form of stories, poems, letters, diaries, newspaper articles or factual information. Children plan their writing and are taught to redraft, always striving for improvement. Spelling, grammar and punctuation are taught using a variety of strategies. Similarly, handwriting is taught every week and we expect that the children will develop a well presented, fluent, joined style by the time they leave our school.

Mathematics

The children are taught a daily mathematics lesson that incorporates whole class teaching and group or individual work. Over the course of each term the children will cover aspects of number, measurement, geometry and statistics. Importantly, they will be given opportunities to use and apply their knowledge and skills and be taught strategies to help them solve problems.

Science

All children are curious and love to ask questions about the world around them. Science helps them to ask the questions 'how?', 'why?' and 'what happens if?' Children learn to make predictions and to investigate their questions by means of a fair test. Our science curriculum aims to ensure that all pupils:

- develop scientific knowledge and conceptual understanding.
- develop understanding of the nature, processes and methods of science.
- are equipped with the scientific knowledge required to understand the uses and implications of science

The Curriculum

Computing



Each class has access to multimedia computers, a range of software and internet access. In addition, we have a computer suite of 30 machines for which each class has timetabled use. Computing is taught as a discrete subject as well as being used across the curriculum. To support this, each class has access to a class set of ipads. Children are taught to use I.T. equipment and software confidently and learn how to communicate and handle information and use I.T. to control devices.

Religious Education and Collective Worship

Our scheme of work for R.E. is based upon the Hertfordshire Agreed Syllabus and reflects the ethnic make up of our school. Whilst R.E. is taught as a separate subject, many aspects can be incorporated into other subject areas. For example, many science topics provide opportunities to encourage a child's sense of awe and wonder and help them to recognise the responsibility they have for caring for the world. The children take part in a daily act of collective worship which is broadly Christian in nature, but our assemblies also reflect our multi-ethnic community. Please contact the Headteacher if you wish to withdraw your child from R.E. or collective worship.

Sex Education

The Governing Body has a written policy which sets out the provision made relating to Sex Education. Part of this provision is through the science curriculum whilst there is a separate programme for Year 5 and 6 pupils. Parents are invited to view beforehand, any materials that will be used. Should any parents wish to withdraw their child from any part of our Sex Education programme, then please contact the Headteacher.

Music

Music is given a high priority and all children have weekly music lessons. Older children are offered the opportunity to learn other instruments. Lessons are given in school by specialist teachers and parents pay a contribution towards this. The instruments may be bought or hired by parents. Currently we offer guitar, piano, flute, brass, violin and woodwind lessons. We also run an orchestra and singing groups as extra-curricular activities.



Building children's learning power

Understanding

Questioning

Being curious. Getting below the surface

Making links

Seeing connections and patterns

Thinking creatively

Using your imagination to explore possibilities

Logical thinking

Working things out methodically and carefully

Being resourceful

Making good use of all available resources

Being accurate

Attention to detail and accuracy in your learning

Managing your Learning

Planning

Working your learning out in advance

Revising

Monitoring and reviewing how your learning is going

Applying past knowledge

Making use of previous learning

Taking responsible risks

Willing to try things without fear of failure

Reflecting

Understanding yourself as a learner and finding ways to improve your learning

Lordship Learning Toolbox

We aim to develop children's independence as learners and to teach our pupils self-help strategies. In order to do this, we teach the children to use these 'learning tools'. Parents are encouraged to use this language when talking to their children about their learning.

Who you learn with

Understanding interdependence

Knowing when it's best to learn on your own or with others

Collaboration

Learning to work together, helping others and contributing to group work

Empathising and Listening

Understanding the views and ideas of others

Learning from others

Picking up good methods, habits and values from others

Focus

Engaging

Being absorbed in learning

Having self control

Avoiding distractions and thinking before acting

Noticing

Being aware of both details and the bigger picture

Persevering

Dealing with difficulties and following tasks through to a conclusion

Displaying a positive attitude

Extra– curricular activities

Sport

With a hall, a large playing field and two playgrounds, Lordship Farm offers good sporting facilities. The curriculum for each year group includes the teaching of games, dance, gymnastics and athletics. Our aim is to give children an appreciation of the value of sport and physical activity and to give them a sense of fair play and teamwork. We have successful sporting teams and participate regularly in matches against other schools, as well as district tournaments and sporting competitions.

Currently children in Year 3 are given the opportunity to participate in a programme of swimming lessons. A parental contribution towards the cost is requested.

Educational visits

Wherever possible, we try to support the work that is going on in class with educational visits that will broaden the children's experience. We also arrange annual residential trips for Junior children which involve being away from home for periods of up to one week. Such trips have tremendous education and social value and we encourage all children to take part.



Charging policy

At Lordship Farm we do not charge for activities but do ask for a voluntary contribution for things like trips and special events. Your child may produce some work in art or technology that they are allowed to take home. In these circumstances we may ask for a small contribution to the cost of the materials. Please speak to the Headteacher in confidence if you have concerns regarding the payment of contributions.

Extra Curricular Activities

We are fortunate to have staff prepared to give up their time to run lunchtime and after school clubs and also have arrangements with other groups, which offer clubs at our school. Each term we offer an extensive range of activities e.g. recorders, art, football, netball, cricket, I.T., pottery, homework and French club.



Meeting Children's Needs

Special Educational Needs

All children have their own, particular strengths and weaknesses. At Lordship Farm, we respond to the needs of the individual child. As an inclusive school, we offer opportunities and challenges for all children and have a responsibility to identify those children with specific needs. These children will normally be identified as a result of observations made by individual class teachers, as well as by the on going assessment procedures in the school. Where necessary, an Individual Education Plan will be devised to support the child's needs and we involve parents at all stages of this process.

In line with statutory regulations, we have a Special Needs policy based on the National Code of Practice which you are welcome to inspect in school. Please speak to the class teacher in the first instance, if you have any concerns about your child.

Child Protection

The school works in partnership with parents to support children in every way possible. However, the Children Act places a clear responsibility on schools to ensure that they work together with other agencies to safeguard and promote the welfare of all children. Mr Parry is the Designated Senior Person with responsibility for safeguarding.

Accessibility

The school building is suitable for children with mobility problems. All areas are accessible for wheelchair users as is the playground. A disabled toilet for staff/visitors has been installed as well as ramps to the main entrance and hall. The school has two designated parking spaces for disabled visitors.

As an 'inclusive' school, we make every effort to help children with disabilities integrate into the school and access the full school curriculum

The School

Starting school

We have a range of strategies in place to ensure that the transition into school is as smooth as possible. Children starting school for the first time vary greatly in their reactions. Some early tears cause more distress to parents than to the child. We find that children are well settled after a few weeks.



The School Day

<i>Morning</i>	<i>All children</i>	<i>8.55 a.m. - 12.00 noon</i>
<i>Afternoon</i>	<i>All children</i>	<i>1.00 p.m - 3.15 p.m.</i>

There is a 15 minute break in the morning session for all KS1 and 2 children. . KS1 have a 15 minute break in the afternoon.

We aim to start school promptly and urge parents to assist their children where possible to be punctual in the morning. Classroom doors open at 8.50am for all classes in the main school and at 8.45am in the Nursery.

It is important that KS1 children are brought to school in the morning and are met at home time. If you cannot do this yourself, please be sure to make arrangements for a friend to do it for you and advise the school who this will be. Similarly parents are asked to let the Office know if they are going to be delayed

If your child arrives at school after 8.55am, then they should report to the Office to be signed in.

At the end of the day the youngest infants are not allowed out of the classroom unless the expected adult is there to collect them. Older children are allowed onto the playground but are reminded to come back into school if the adult with whom they go home is not there. (Please see our Security Pamphlet for full details of our policy)



Attendance and Absence

Attendance

Good attendance is essential if progress is to be maintained. If your child is absent, then please telephone the school on the morning of the first day of absence. It is our policy to contact any parents from whom we have not received a message. If we are unable to contact you, then please send a note in with your child on their return to school, to explain their absence. Again, if we do not receive a note from you we will follow up the absence with a letter home. In this way we can ensure that the whereabouts of all children is known.

Illness

If your child is unwell then please keep them at home. Please do not bring your child back within 48 hours of sickness or diarrhoea in order to prevent the spread of illness. It is the school's policy not to administer medicines. After any illness, please make sure your child is fully able to participate in all usual school activities before they return to school. If your child is taken ill at school we will contact you and so it is vital that we have your contact details. If a child suffers an injury whilst at school, we will send a note home on the same day to inform you. Please try to make appointments for your child e.g. at the dentist's or doctor's, outside of school hours. If this is unavoidable, then please notify your child's teacher beforehand. Please come to the Office to collect and deliver your child. Children are not allowed out of school on their own during the school day, for any reason.

Holidays

At Lordship Farm we support the Government and the Local Authority in their attempts to dissuade parents from taking their children on holiday during term time. We believe time out of school is damaging for two reasons. Firstly, children find it very difficult to catch up on the learning that they have missed and in the longer term this can have a negative impact on their progress. Secondly and as importantly, children can be given a very unhelpful message about the value and importance of going to school. The Pupil Registration Regulations 2006 state that 'leave of absence should only be granted due to the special circumstances relating to that application'.

As parents and carers I know that you will want the best possible education for your child. By taking holidays during designated holiday periods, you will be supporting your child's full attendance, learning and development.

If you have extenuating circumstances that mean that absence from school is unavoidable, then please complete a 'Holiday Request' form available from the Office or our Website. Requests will then be considered for authorisation and a reply will be sent within 10 working days.

School Uniform

School uniform is compulsory for all children

Hair that is appropriate for school
(Severe styles and shaved lines are not appropriate)

No jewellery except one stud ear-
ring in each ear (to be removed or covered
for P.E.)

Blue school sweatshirt
White polo shirt

Grey trousers

Black shoes



Blue school sweatshirt
White polo shirt/blouse
Blue school cardigan
Grey skirt or trousers
Blue/white checked
summer dress

Black school shoes,
summer sandals



P.E. Kit
White T-shirt
Black shorts
Please keep this at school in a
named P.E. bag

Children will be expected to wear their uniform smartly and take pride in their appearance.

Sweatshirts, fleeces, polo shirts, T-shirts, baseball caps and bags bearing the Lordship Farm logo, are all available to order online at www.stparent.co.uk or via the link on our website.

Please remember to name all of your child's belongings

Eating and Drinking

School Meals

Lunches are cooked on the premises and are of a very high standard. The kitchen is able to cater for children with individual dietary requirements. School lunch is organised on a cafeteria basis. We are aware that selecting meals is a big step for young children when they start school. Parents of young children are therefore invited to participate in the selection of their child's meal. The menu for the term is sent home so that you can choose with your child. Currently, all infant children are entitled to a free school meal under the Government's Universal Free School Meals scheme.



The current cost of meals can be obtained from the School Office. They should be paid for in advance for each half term or full term by cheque. (Adjustments are made for absences.) Payment is also accepted on a weekly basis by cheque or cash. Please note that all payments must be made on the first day of each week.

Lunch money should be exact and sent to school in an envelope marked with the child's name and the amount enclosed.

If you think that you may be eligible for free meals, then please enquire at the Office.

Packed Lunches

If you would prefer your child to bring a packed lunch, then please ensure that you name the lunchbox and any drinks containers. For safety reasons we do not allow glass bottles, hot or fizzy drinks. As part of our commitment to healthy eating, we expect parents to provide a balanced meal.

Children may bring a healthy snack to eat at breaktime (fruit or vegetables). We also offer free fruit to our Foundation Stage and Key Stage 1 children. In addition we run a 'Fruit Card' system whereby other children can purchase subsidised fruit from school.

School Milk

Children in the Infant Department can have milk during the morning. This has to be paid for a term at a time in advance. The price will vary according to the length of the term, but you will be advised in good time of any change. At present school milk is subsidised by the European Community. Regrettably we cannot refund for absences.

Please note that we are a nut-free zone!

Additional Information

Discipline

We look to all parents to encourage in their children a positive attitude towards school. We expect the children to be well mannered and behaved in class and on the playground, I am sure that parents can be relied upon to give their full support to the school in achieving this aim. If parents and school work together as a team, expecting high standards of behaviour and effort at school and at home, the child feels more secure and is better able to take full advantage of the educational opportunities we can offer at Lordship Farm. We have found that a positive approach to discipline, encouraging good behaviour and effort with praise and reward is the most effective method.

If at any time a child's behaviour gives us serious concern, then we show our disapproval strongly and privileges may be withdrawn or children may have to undertake tasks during playtimes. If a child's behaviour continues to give concern, we will request a consultation with the parents to discuss appropriate joint actions.

Travelling to school

At Lordship Farm, we encourage parents to use sustainable forms of transport to travel to school. We have a cycle shelter and scooter parks around the school. Parents wishing their child to cycle, should accompany them. Children must wear a cycle helmet.

The car parks at the top of Willian Way and Howard Drive become very congested at the beginning and end of the day. Please park with consideration to other road users, pedestrians and local residents. Please do not obstruct driveways or park on the grass verges. The local police and law enforcement officers are active in this area and will prosecute drivers parking illegally.



How can I help?

Helping my child to learn at home

All children will bring a reading book or a bag of words home every day. Spending time practising words or sounds, listening to your child or in the case of older children, discussing a book they have read, will greatly benefit their educational progress. Older children will be given homework activities and may bring home spellings or times tables to learn. Again, supporting your child with these activities, including giving them a quiet place to work will be very beneficial.

But most important is that you take an interest in what your child does at school and keep asking questions. It can be very frustrating when you ask your child 'What did you do at school today?' and you are met with the response of 'Nothing!' But please persevere. Finding opportunities to write and practise mathematical skills e.g. using money, are of great value.

How can I get involved at Lordship Farm

If you have the time, we welcome extra help at our school. Parents come in and work alongside the teachers. They may hear readers, help with cooking or art work - in fact anything at all! If you would like to come in please chat to your teacher. It will be left to the discretion of the teacher whether it is best for you to work in the class that your child is in, or elsewhere.

We especially welcome help from parents on school trips, either for transport to places we visit or to help supervise on a day out. Normally we ask for help in the letter explaining about the trip.

You may like to help with fund raising and join our parents' committees. All new parents get a welcome letter with details of the next committee meeting.

The school has a governing body which meets twice a term and supports the Headteacher in the running of the school. Representatives from the parents are governors and volunteer to serve for four years. You may be interested in putting your name forward when the next vacancy occurs. The Headteacher will be pleased to talk to you about this.

Partnership with parents

Partnership with Parents

At Lordship Farm we firmly believe that the education of children is carried out most effectively through a partnership between home and school and that parents and carers have a positive role to play in supporting the work of the school. To this end, we ask you to commit to and sign a Home/School Agreement. This details what you can expect from us and makes clear what we would like you to do in order to help your child succeed.

We have an 'Open door' policy and welcome parents into school to talk to staff, to work in classrooms or to help support activities. If you or your child ever experience problems with our school then please contact the class teacher as soon as possible or speak to the Headteacher. Most complaints will normally be resolved informally. However, in the event that a parent may still feel dissatisfied, the Headteacher will be able to provide parents with a copy of the school's formal complaints procedure.

Our website is updated on a weekly basis. Here you will find useful information including term dates, copies of all letters that are sent out and school policies. We also have a Facebook page which can be accessed from our website which has lots of photos from each class.

www.lordshipfarm.herts.sch.uk

We produce a regular newsletter to keep in touch with parents. A lot of information comes home by letter. We try to send most letters out to you on a Friday so please check your child's bag regularly.

Parents who sign up for our 'Parentmail' service are able to receive e-mail and text alerts as well.

Each Half term, you will receive a Curriculum Overview of the themes that your child will be studying.

The P.T.A. will write regularly to you inviting you to particular functions. Mrs. Thorn, our school bursar, is always pleased to advise you on any matter relating to school. Please call in or telephone if there is any matter you want to discuss.

Information about your child's progress

Consultations for parents are held two times a year. We formally invite you on these occasions to come along, talk in private with the teacher and see your child's work. In addition you will receive a termly report for your child and you will have the opportunity to meet your child's next teacher before your child moves to their next class. Teachers are pleased to talk to parents informally about a child's progress at any time during the year. Please contact the teacher directly.

Partnership with parents

Health and Safety Matters

Below are listed some of the more common diseases and problems with the recommended time children should be kept at home:

<i>Chicken pox</i>	6 days minimum from appearance of rash
<i>Measles</i>	7 days minimum from appearance of rash
<i>Mumps</i>	7 days minimum until last of swelling subsides
<i>Throat infections</i>	Until child is properly fit
<i>Whooping cough</i>	21 days
<i>German Measles</i>	5 days from appearance of rash Please notify school so that pregnant women can be informed.
<i>Worms</i>	Until the first tablet or dose of medicine is taken. Please notify the school so that parents can be alerted.
<i>Headlice</i>	Head infestations are quite common amongst children and can cause a great deal of discomfort and embarrassment. The well cared for, clean child is not immune. School checks have long been discontinued and parents are responsible for carrying out regular checks. Treatment advice can be obtained from your doctor and your child can return to school as soon as he or she has been treated. Please inform the school so that other parents can be alerted.
<i>Sickness/ diarrhoea</i>	48 hours from last symptoms

After an illness, please make sure that your child is fully able to participate in all usual school activities and able to go outside for break times before they return to school.

Medicines

The school is not able to keep or dispense medicines (except for long term disorders such as asthma, epilepsy etc.) Parents are asked to complete antibiotic courses for children at home. For children suffering from asthma our policy is that where possible the child carries their inhaler with them or it is kept within reach in the classroom. Parents of children with medical conditions are asked to work with the school to complete a Care Plan for the child.

Medicals

During their time at Lordship Farm, children may be examined by the school nurse. You will be informed in advance and asked to be present at these examinations. There may also be periodic examinations of sight, hearing and teeth.

Statistical Information

Results of the National Curriculum Assessments of 11 Year Olds

Key Stage 2 Assessments 2014

These tables show the percentages of Year 6 children achieving each level.

Teacher Assessment

	Dis	Abs.	W	1	2	3	4	5	6	4+
ENGLISH	0	0	0	0	0	6	43	49	0	92
MATHEMATICS	0	0	0	0	0	8	45	45	0	90
SCIENCE	0	0	0	0	0	8	63	27	0	90

Task and Test Results

	Dis	Abs.	Below 3	3	4	5	6	4+
READING	0	0	0	4	35	57	2	96
GRAMMAR, PUNCTUATION AND SPELLING	0	0	0	18	21	59	2	82
MATHEMATICS	0	0	2	14	37	41	4	84

Dis: disapplied under sections 364 and 365 of the Education Act 1996

Abs: failed to register a level due to absence

W: working towards Level 1

B: children not entered for tests because they were working below the level of the tests

N: pupils not awarded a level in the test

The figures may not total 100% because of rounding

Statistical Information

Attendance Information

We are obliged to provide information to the D.f.E.S. regarding pupil absence. The following information is the latest available (Summer term 2013).

Total number of day pupils of compulsory age on roll for at least one session : 415

Percentage of half days (sessions) missed through: Authorised absence: 3.2%

Unauthorised absence: 0.4 %